

SEZIONATRICE AUTOMATICA A LAMA INCLINABILE CON GUIDA POSTERIORE MOTORIZZATA
AUTOMATIC PANEL SAW WITH TILTING BLADE AND POWERED PUSHER
SCIE A PANNEAUX AUTOMATIQUE A LAME INCLINABLE AVEC GUIDE MOTORISE
AUTOMATISCHE PLATTENAUFTEILSAEGE MIT SCHRAEGSTELLBAREM SAEGEBLATT UND
MOTORISCHER HINTERER FUEHRUNG
SECCIONADORA AUTOMATICA CON HOJA INCLINABLE Y GUIA POSTERIOR MOTORIZADA

The logo 'MX' in a large, bold, stylized font. The 'M' and 'X' are interconnected, with the 'X' having a unique shape where the right vertical stroke is slightly offset.

CATALOGO DELLE PARTI DI RICAMBIO
SPARE PARTS CATALOGUE
CATALOGUE DE PIECES DETACHEES
ERSATZTEILKATALOG
CATALOGO PARTES DE RECAMBIO

PER ORDINARE QUALSIASI PARTE DI RICAMBIO È INDISPENSABILE COMUNICARE:

- ① Numero di matricola e modello
- ② Numero della tavola del catalogo parti di ricambio
- ③ Riferimento dell'edizione
- ④ Numero di codice del particolare richiesto
- ⑤ Quantità richiesta di ciascun particolare

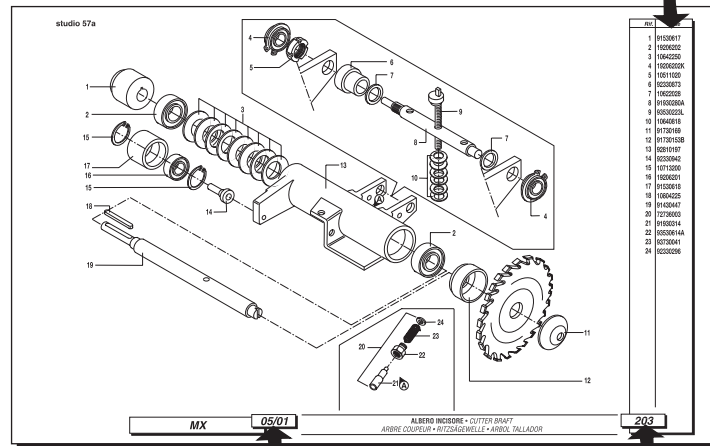
Inoltre per i componenti elettrici, elettromeccanici, elettropneumatici è indispensabile indicare:

- ⑥ Tensione di esercizio della macchina
- ⑦ Frequenza di rete (Hz). Vedi schema elettrico e legenda allegati. Eventualmente fornire i riferimenti indicati sul corpo del particolare.

RIVOLGERSI SOLO AL LOCALE CONCESSIONARIO DISTRIBUTORE. UTILIZZARE LA FOTOCOPIA DELLA SCHEDA ALLEGATA PER I VOSTRI ORDINI.

CASADEI
 CASADEI GIANFRANCO S.p.A.
 Via Statale Marecchia 18 - 47827 Villa Verucchio (RN) Italy

Model Anno
 Serial No Kg.
 V AC PH
 Hz kW A



WHEN ORDERING SPARE PARTS IT IS VERY IMPORTANT TO SPECIFY THE FOLLOWING:

- ① Serial number and model
- ② Page number of the spare parts book (Tav)
- ③ Year book was issued (Ed)
- ④ Item number
- ⑤ Exact quantity requested for each item number

For all electrical, electromechanical, electropneumatic components always specify:

- ⑥ Voltage & cycle of the machine (V AC-Ph-Hz) (See electrical diagram or any other reference indicated on the metal plate attached to the machine body).
- ⑦ Data indicated on label of component/part required.

SPARE PARTS MUST BE ORDERED ONLY THROUGH AN AUTHORIZED DEALER OR DISTRIBUTOR. WHEN ORDERING PLEASE USE A PHOTO-COPY OF THE ENCLOSED FORM.

POUR COMMANDER N'IMPORTE QUELLE PIÈCE DÉTACHÉE IL FAUT COMMUNIQUER:

- ① Numéro de matricule et modèle
- ② Le numéro de la page du catalogue pièces détachées
- ③ La référence de l'édition
- ④ Le numéro de code de la pièce demandée
- ⑤ La quantité demandée pour chaque pièce

D'autre part, pour les pièces électriques, électromagnétiques, électropneumatiques il faut indiquer:

- ⑥ La tension d'exercice de la machine
- ⑦ La fréquence de réseau (Hz). Voir schéma électrique et légende joints. Eventuellement fournir également les références indiquées sur la pièce-même.

S'ADRESSER EXCLUSIVEMENT AU DISTRIBUTEUR AGREE DE LA REGION. UTILISER LA PHOTOCOPIE DE LA FICHE JOINTE POUR VOS COMMANDES DE PIÈCES DÉTACHÉES.

BEI BESTELLUNG VON ERSATZTEILEN BITTE STETS FOLGENDE DATEN MITTEILEN:

- ① Seriennummer und modell
- ② Tafel-Nr. des Ersatzteildataloges
- ③ Ausgabe (z.B. EDO)
- ④ Ersatzteilnummer
- ⑤ Stückzahl

Bei elektrischen, elektromechanischen, elektropneumatischen Teilen ausserdem angeben:

- ⑥ Voltzahl (V) der relativen Maschine.
- ⑦ Netzfrequenz in Hz. Siehe anliegendes Elektroschema und Beschreibung. Eventuell direkt an der Maschine ablesen.

NUR ÜBER HÄNDLER/IMPORTEUR BESTELLEN. FÜR BESTELLUNGEN BITTE FOTOKOPIE DES BEIGEFÜGTEN FORMULARS VERWENDEN.

SIMBOLI • SYMBOLS • SIMBOLES • SIMBOLE	
T Notegenerali General notes Notes générales Allgemeine Hinweise	 Codici riportati in tabella Codes indicated in the table Codes indiqués sur la table In der Tabelle aufgeführte Codes
F Specifico per la nazione indicata Specific for this country Spécifique pour cette nation Auf dieses Land bezogen	 Codifica che continua in pagina successiva Codification which continues on the following page Codification qui continue a la page suivante Kodifizierung, die auf der naechsten seite weitergeht
 Codice di raggruppamento Grouping code Code de regroupement Gruppierungscod	 Codifica con continuazione da pag. precedente Codification which continues from the previous page Codification qui continue de la page precedente Kodifizierung, die von der vorigen seite weitergeht

101	BASAMENTO•BASÉ BATI•GEHAEUSE•BANCADA
102	RICOPERTURAPIANO BASAMENTO•FRAMETABLE COATING REVETEMENTTABLEBATI•BESCHICHTUNGFÜRBETT-TISCH•REVESTIMIENTOPLANO BASE
201	CARROPORTALAME•BLADECARRIAGE CHARIOTPORTE-LAME•BLATTSCHLITTEN•CARROPORTADISCOS
202	ALBEROSEGA•SAWARBOR ARBRESCIE•SÄGEWELLE•ÁRBOLSIERRA
203	ALBEROINCISORE•CUTTERSCHAFT ARBRECOUPEUR•RITZSÄGEWELLE•ÁRBOLTALLADOR
204	SOLLEVAMENTO LAMASEGA•SAWBLADELIFTING SOULEVEMENTLAMESCIE•SÄGEBLATTHUB•ELEVACIÓNHOJASIERRA
205	LAMA FISSA•FIXEDSAWBLADE LAMEFIXE•FESTSÄGEBLATT•HOJAFIJA
206	INCLINAZIONE LAMA•SAWBLADE TILTING INCLINAISONLAME•SÄGEBLATTNEIGUNG•INCLINACIÓNHOJA
207	MOTORIZ. LAMA FISSA•FIXEDSAWBLADE MOTOR. •MOTORISATIONLAMEFIXE MOTORISIERUNGDES FESTSÄGEBLATTES•MOTORIZACIÓNHOJAFIJA
208	MOTORIZ. LAMA INCLINABILE•TILTINGSAWBLADEMOTORIZATION MOTORIS. LAME INCLINABLE•MOTORISIERUNGDES NEIGBARENSÄGEBLATTES• MOTORIZACIÓNHOJA INCLINABLE
301	TRAINOCARROLAME•SAWCARRIAGEFEED ENTRAINEMENTCHARIOTSCIE•DURCHZUGSÄGEWAGEN•REMOLQUECARROHOJAS

401	BARRADIPRESSIONE•HOLD-DOWNBAR BARREDEPRESSION•DRUCKBALKEN•BARRAPRENSORA
402	PRES. ANT. +BANDELLE•FRONTPRESSER+GUARDS PRESSEURANT.+PROTECTIONS VORDERDRUCKELEMENT+SCHUTZVORRICHTUNGEN PRESIÓNDELANTERA+BANDAS
501	GUIDA ACCOSTATORE•APPROACHINGUNITGUIDE GUIDE DISPOSITIFRAPPROCHEMENT•FÜHRUNGANNÄHERUNGSEINRICHTUNG GUÍA APROXIMADOR
502	CARRELLO ACCOSTATORE•APPROACHINGUNITCARRIAGE CHARIOTDISPOSITIFRAPPROCHEMENT•SCHLITTENANNÄHERUNGSEINRICHTUNG CARRO APROXIMADOR
601	PIANO ANT. A SCOMPARSA•DISAPPEARINGFRONTTABLE TABLEANT. A DISPARATION•VERSCHWINDUNGSVORDERTISCH•PLANODEL ESCAMOTABLE
602	PIANI ANT. FISSI•FIXEDFRONTTABLES TABLESANT. FIXES•FESTE VORDERTISCHE•PLANOSDEL.FIJOS
603	PIANI ANT. A VELO ARIA•FRONTTABLES WITH AIR CUSHION TABLESANT. A COUSSIN D'AIR•VORDERTISCHE MIT LUFTKISSEN•PLANOSDEL DE COLCHÓNDEAIRE
604	PIANI ANT. PER TAGLI INCLINATI•FRONTTABLES FOR SLANTING CUTS• TABLESANT. POUR COUPE INCLINEE•SCHLITTENANNÄHERUNGSEINRICHTUNG• PLANOSDEL.PARACORTES INCLINADOS
701	GUIDA TAGLI IN QUADRO•FENCE FOR SQUARE CUTS GUIDE COUPEREQUARRÉES•ANSCHLAG FÜR RECHTWINKLIGESCHNITTE GUÍA CORTES EN CUADRA
702	GUIDA TAGLI INCLINATI•FENCE FOR SLANTING CUTS GUIDE COUPES INCLINEES•ANSCHLAG FÜR SCHRÄGSCHNITTE GUÍA CORTES INCLINADOS
801	ARMADIO ELETRICO•ELECTRIC CUBICLE ARMOIRE ELECTRIQUE•SCHALTSCHRANK•CAJA ELÉCTRICA
802	PENSILE QUADRO COMANDI•SUSPENDED CONTROL BOARD TABLEAU DE COMMANDE SUSPENDU•SCHALTKASTEN CUADRO DEMANDOS COLGANTE

901 **GUIDE SPINTORE • PUSHER GUIDES**
GUIDES POUR GUIDE MOTORISE • SCHIEBER FÜHRUNG HEN • GUÍAS IMPULSOR

902 **PIASTRE TRAVERSA SPINTORE • PUSHER TRAVERSE PLATES**
*PLAQUE TRAVERSE GUIDE MOTORISE • PLATTER FÜR SCHIEBER QUERBALKEN
PLANCHA TRAVESAÑO IMPULSOR*

903 **TRAVERSA SPINTORE • PUSHER TRAVERSE**
TRAVERSE GUIDE MOTORISE • SCHIEBER QUERBALKEN • TRAVESAÑO IMPULSOR

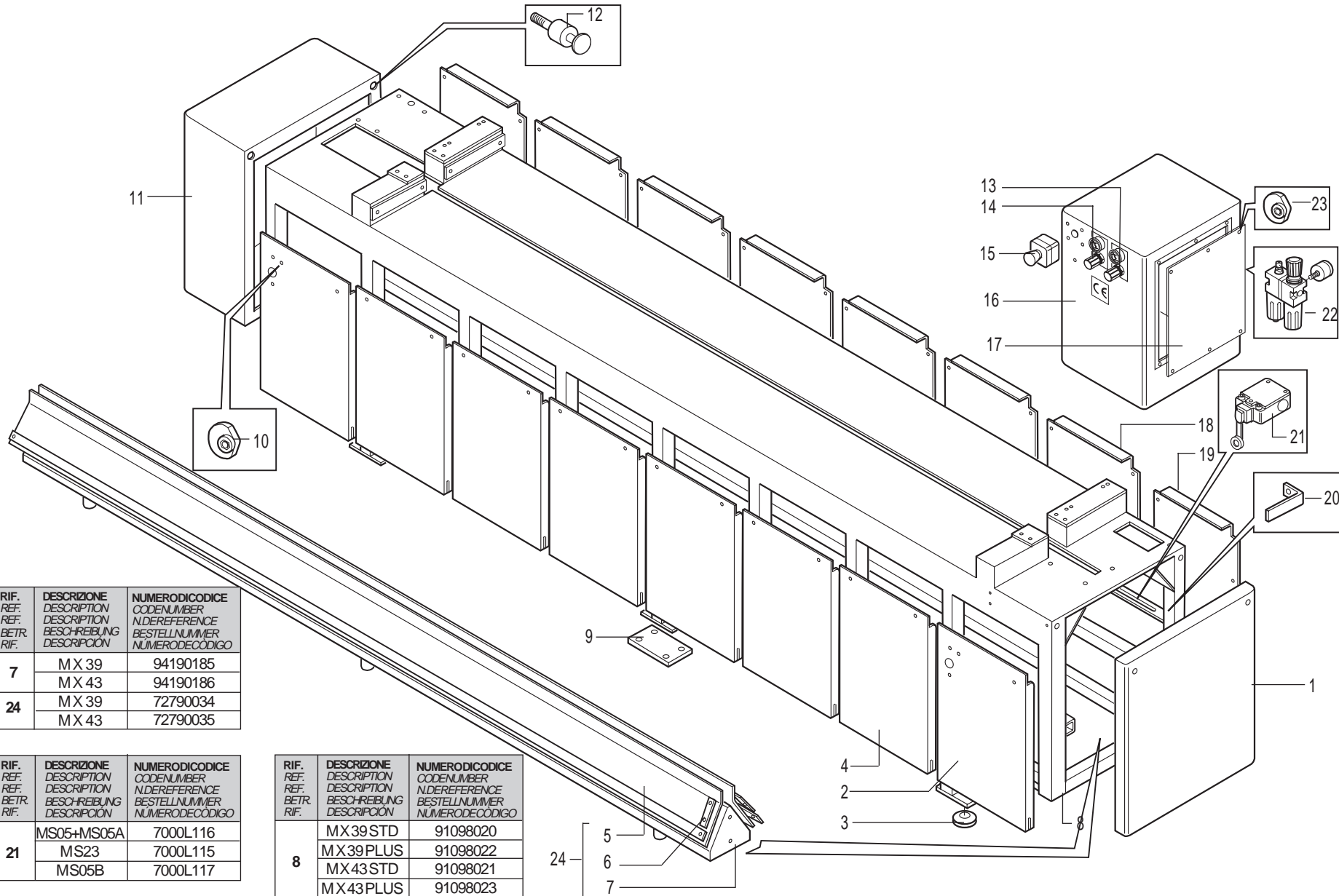
904 **ENCODER • ENCODER**
ENCODER • ENCODER • ENCODER

905 **PINZE • CLAMPS**
PINCES • GREIFERS • PINZAS

906 **PROTEZIONE SPINTORE • PUSHER GUARD**
*PROTECTION GUIDE MOTORISE • SCHUTZ VORRICHTUNG FÜR SCHIEBER
PROTECCIÓN IMPULSOR*

T01 **SIMBOLOGIE • SYMBOLS**
SYMBOLS • SYMBOLE • SIMBOLOGÍAS





A01 **ACCESSORI IN DOTAZIONE • STANDARD ACCESSORIES**
ACCESORIOS EN DOTACION • STANDARZUBEHÖRE • ACCESORIOS INCLUIDOS

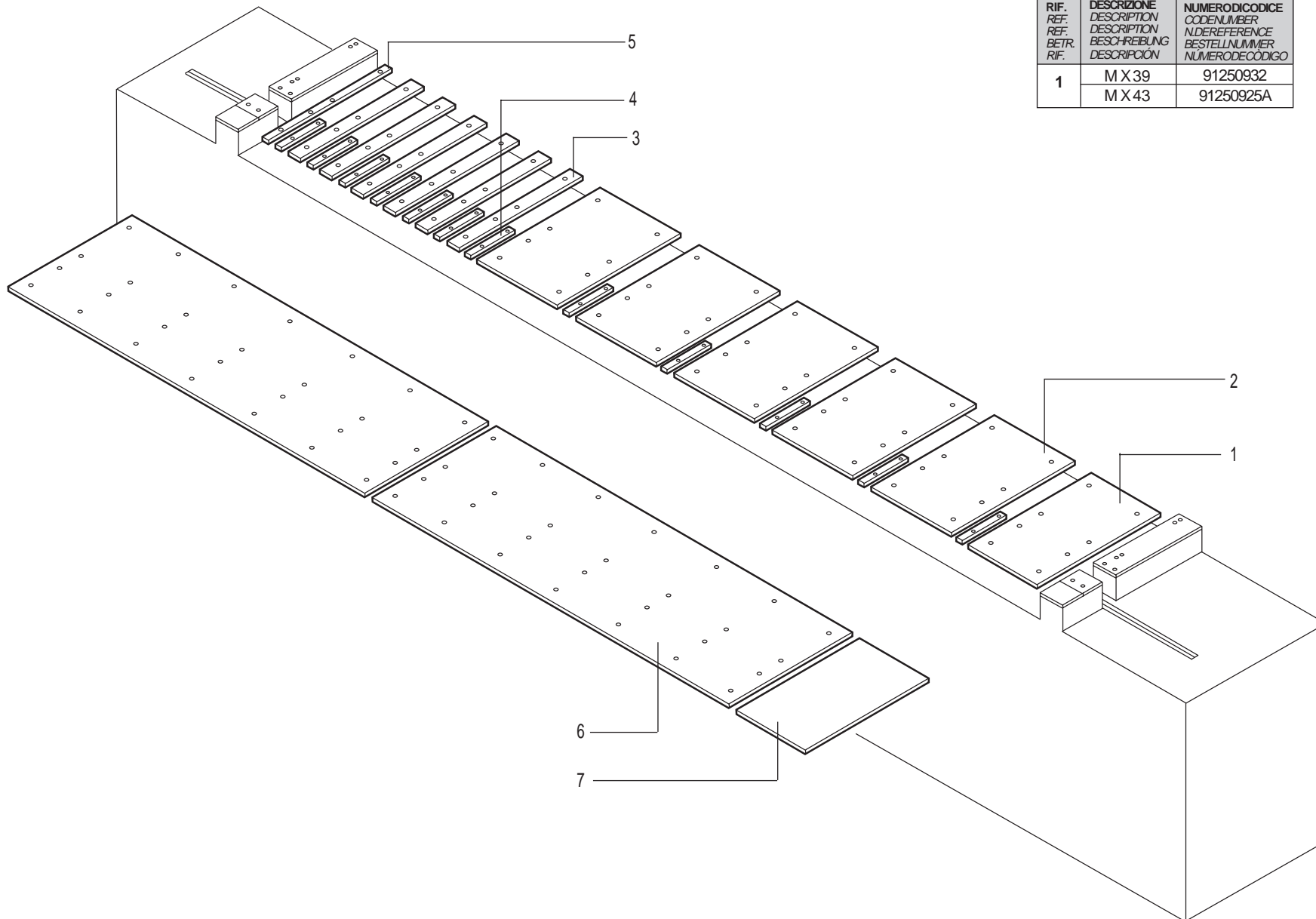


RIF. REF. BETR. RIF.	DESCRIZIONE DESCRIPTION BESCHREIBUNG DESCRIPCION	NUMERODICODICE CODENUMBER N.DEREFERENCE BESTELLNUMMER NUMERODECODIGO
7	MX 39	94190185
	MX 43	94190186
24	MX 39	72790034
	MX 43	72790035

RIF. REF. BETR. RIF.	DESCRIZIONE DESCRIPTION BESCHREIBUNG DESCRIPCION	NUMERODICODICE CODENUMBER N.DEREFERENCE BESTELLNUMMER NUMERODECODIGO
21	MS05+MS05A	7000L116
	MS23	7000L115
	MS05B	7000L117

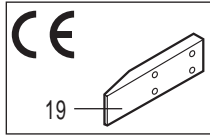
RIF. REF. BETR. RIF.	DESCRIZIONE DESCRIPTION BESCHREIBUNG DESCRIPCION	NUMERODICODICE CODENUMBER N.DEREFERENCE BESTELLNUMMER NUMERODECODIGO
8	MX 39 STD	91098020
	MX 39 PLUS	91098022
	MX 43 STD	91098021
	MX 43 PLUS	91098023

Rif.	Code
1	91190590
2	91130536
3	94610060
4	91130535
5	10360030
6	92230233
7	
8	
9	93330200
10	94010001
11	91180255A
12	91930865
13	752L1007A
14	752L1006A
15	7000L122
16	91190744
17	91190745
18	91130502A
19	91130503A
20	92730059
21	
22	752L1001A
23	11000076
24	



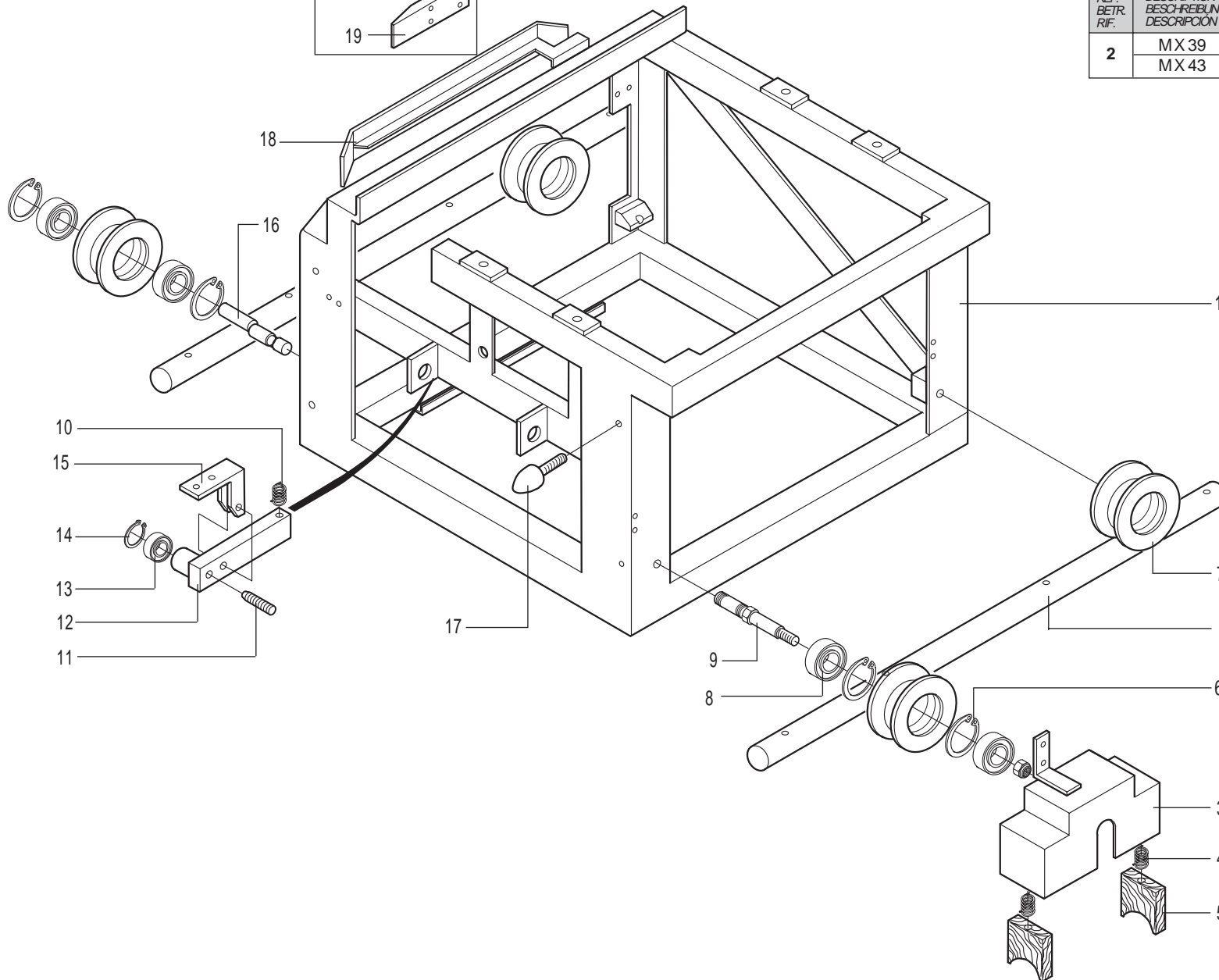
RIF. REF. BETR. RIF.	DESCRIZIONE DESCRIPTION BESCHREIBUNG DESCRIPCIÓN	NUMERODICODICE CODENUMBER N.DEREFERENCE BESTELLNUMMER NUMERODECÓDIGO
1	MX 39	91250932
	MX 43	91250925A

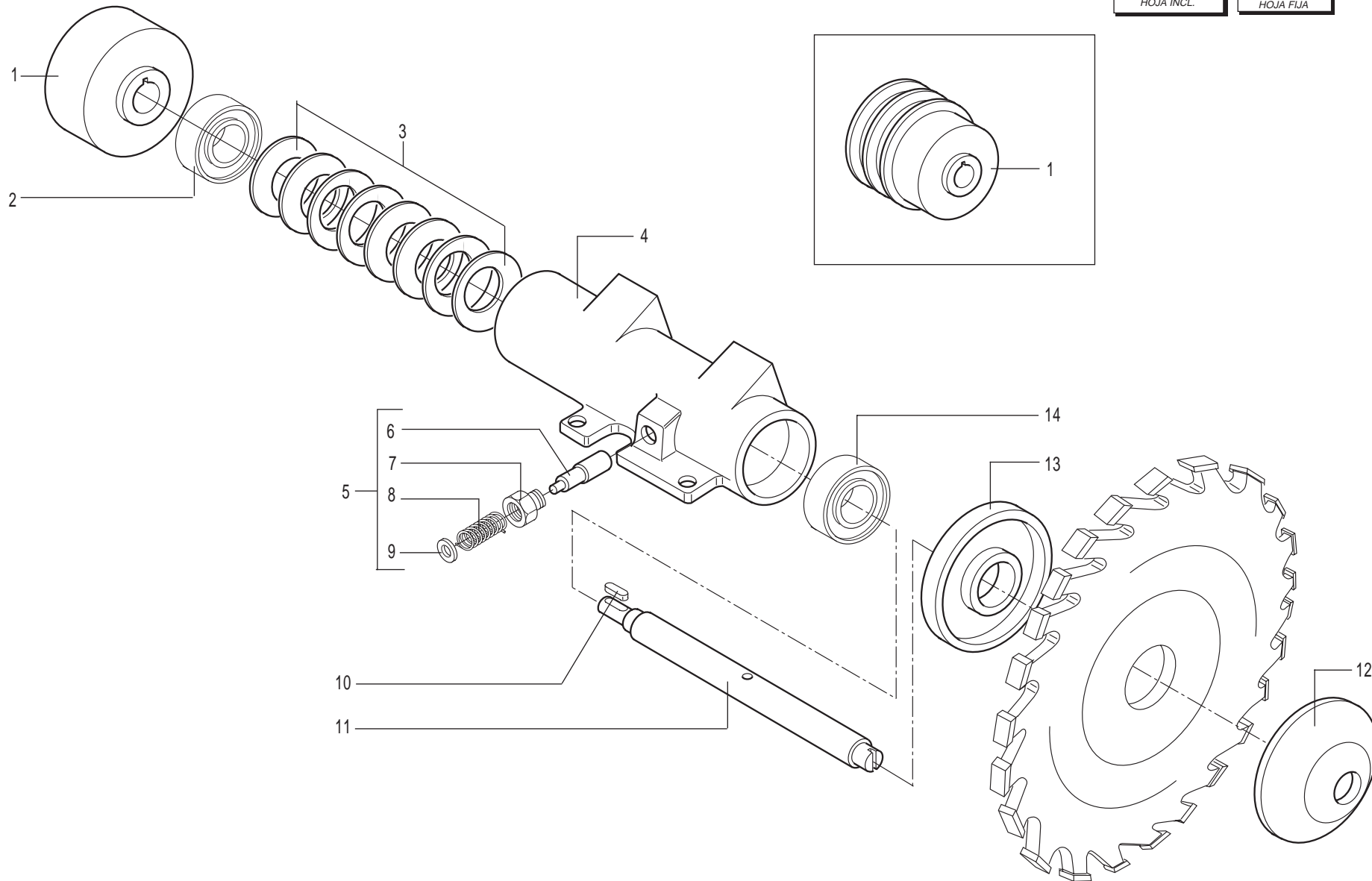
Rif.	Code
1	
2	91250917A
3	91250919A
4	91250924A
5	911250937
6	91250939
7	91250940



RIF. REF. BETR. RIF.	DESCRIZIONE DESCRIPTION BESCHREIBUNG DESCRIPCION	NUMERODICODICE CODENUMBER N.DEREFERENCE BESTELLNUMMER NUMERODECODIGO
2	MX 39 MX 43	93430101A 91930921A

Rif.	Code
1	92890417A
2	
3	91190524
4	94650016A
5	93730008
6	10714200
7	91550159
8	18416302
9	93530699
10	93730031
11	91930336
12	92230934
13	19406002
14	10720600
15	92290928
16	91830119A
17	11000048
18	94090506
19	94030020

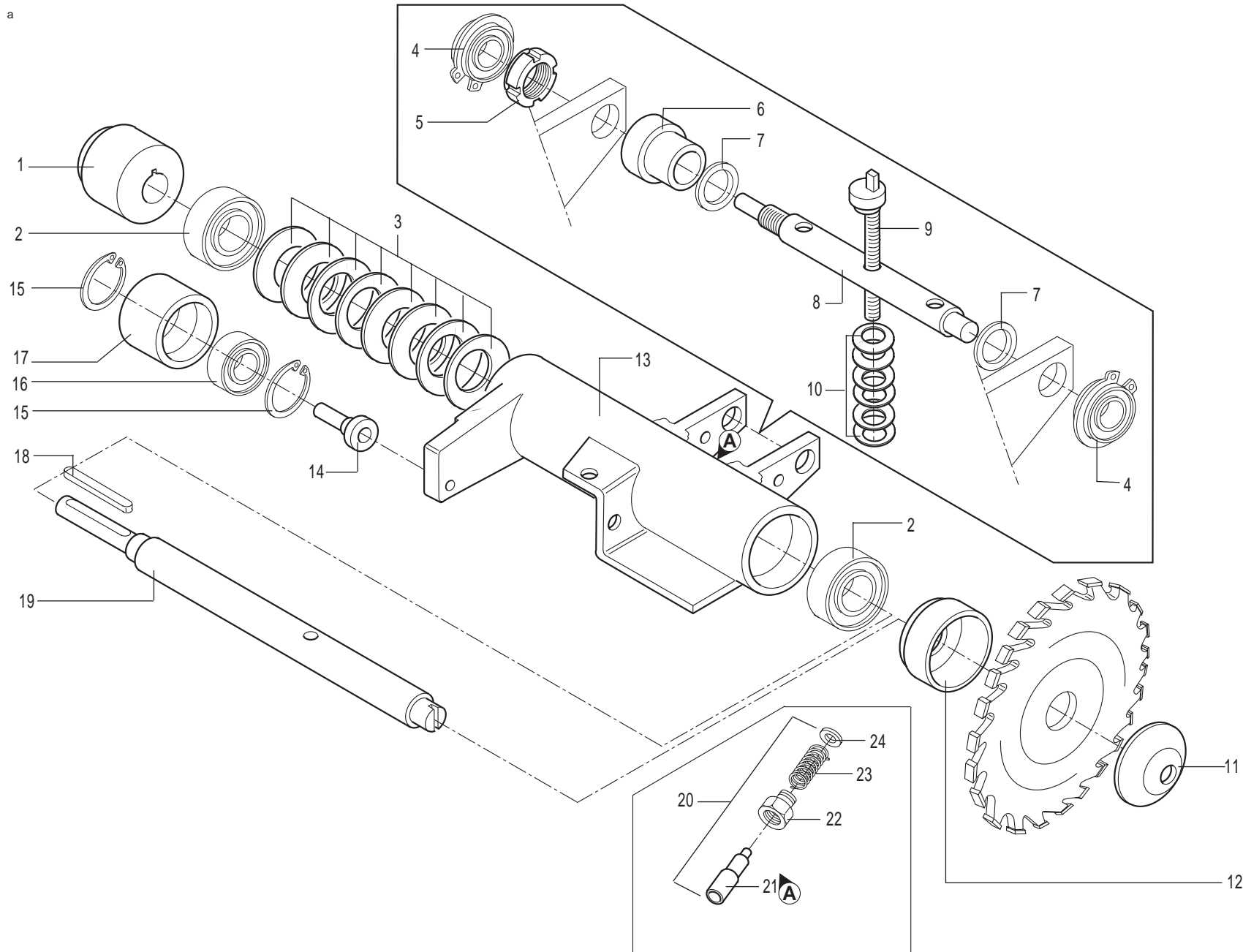




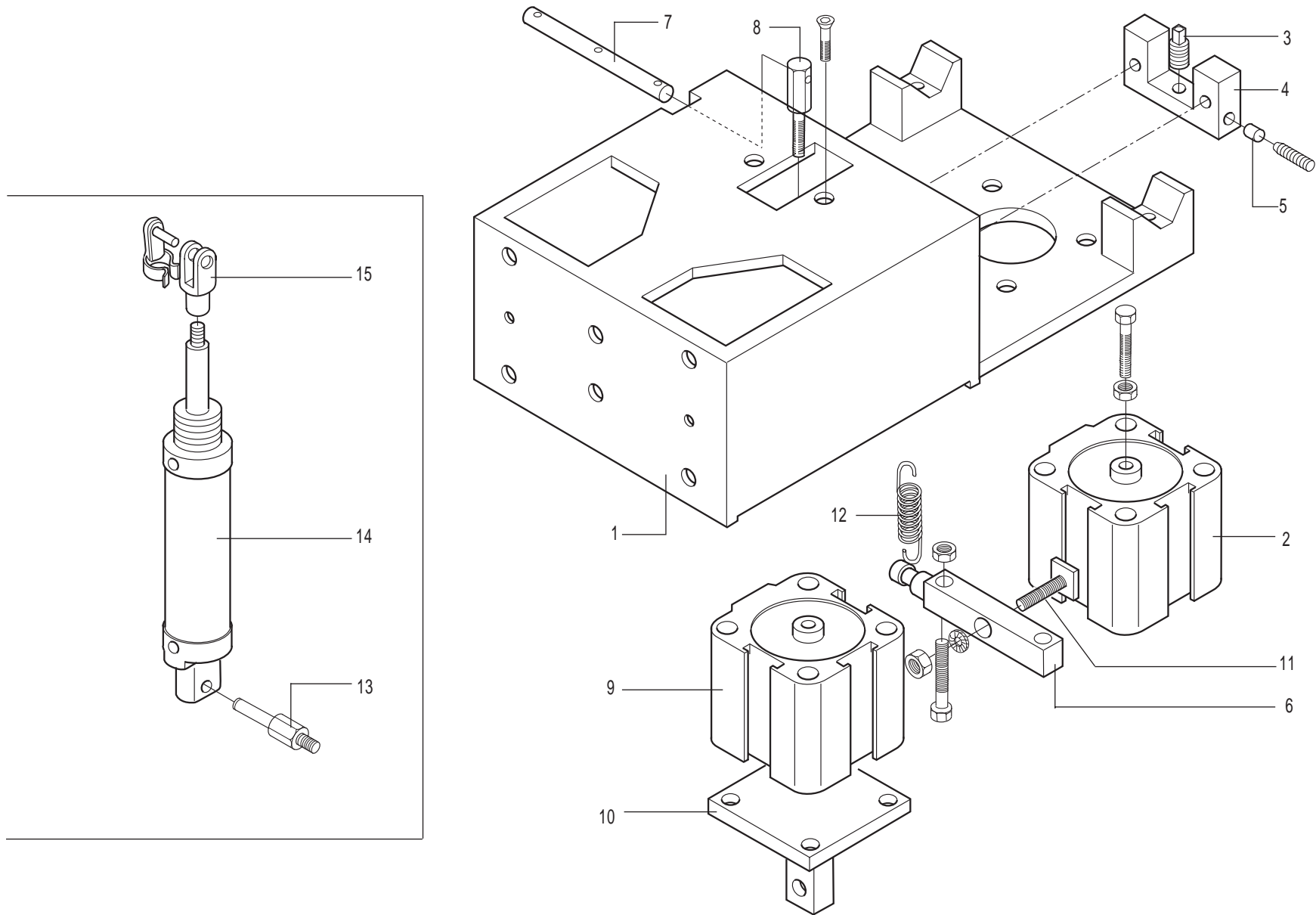
** LAMA INCL.
TILTING SAW BLADE
LAME INCL.
SÄGEBLATTNEIGUNG
HOJA INCL.

* LAMA FISSA
FIXED SAW BLADE
LAME FIXE
FESTSÄGEBLATT
HOJA FIJA

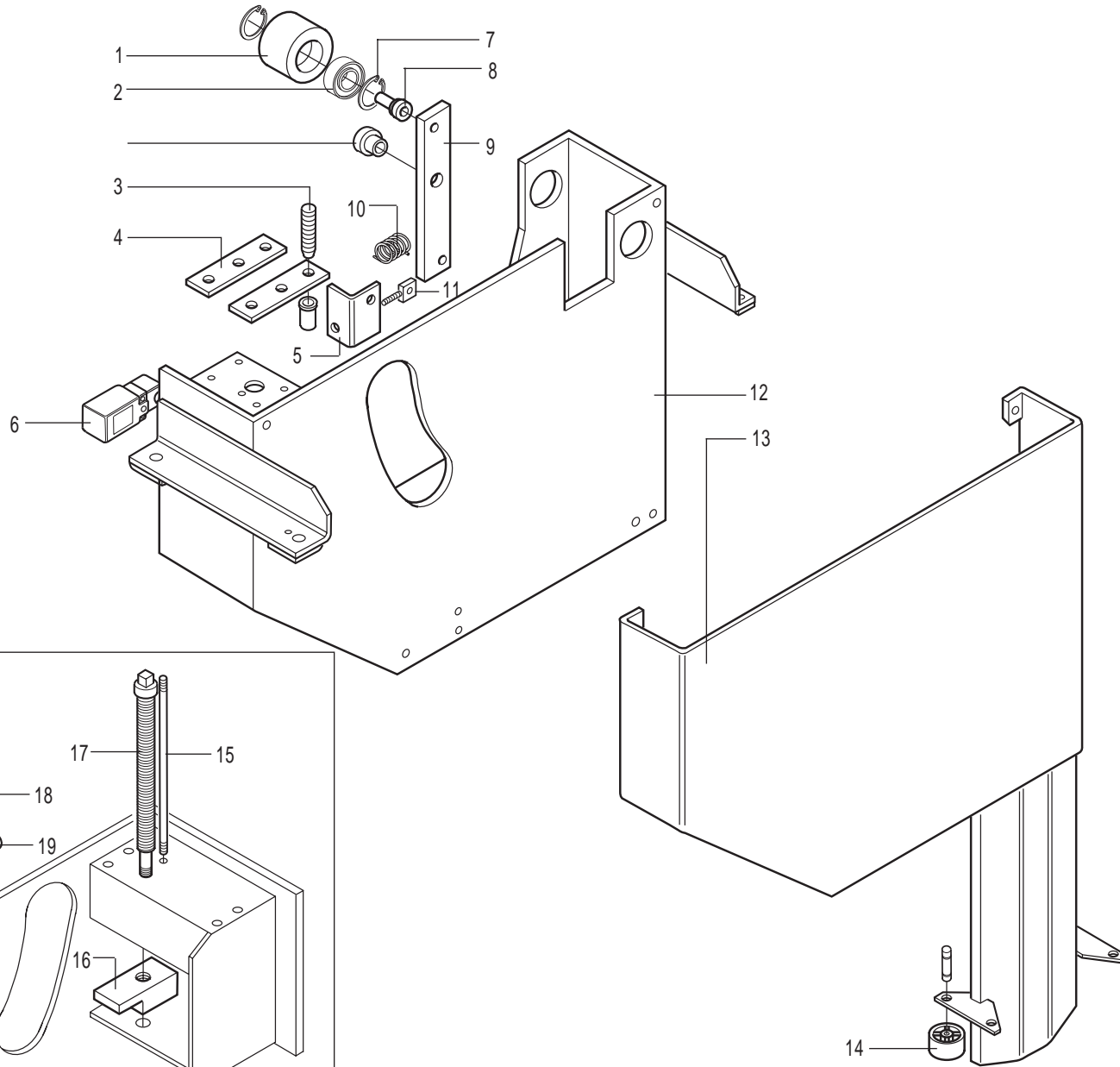
Rif.	Code
LAMA INCL.**	1 91530616
LAMA FISSA*	1 91530626
	2 19206204
	3 10643070
	4 92810198
	5 720101A
	6 91930314
	7 93530614
	8 95730041
	9 92330296
	10 10804325
	11 91430446
LAMA INCL.	12 91730167
LAMA FISSA	12 91730168
LAMA INCL.	13 91730152
LAMA FISSA	13 91730164
	14 19206005



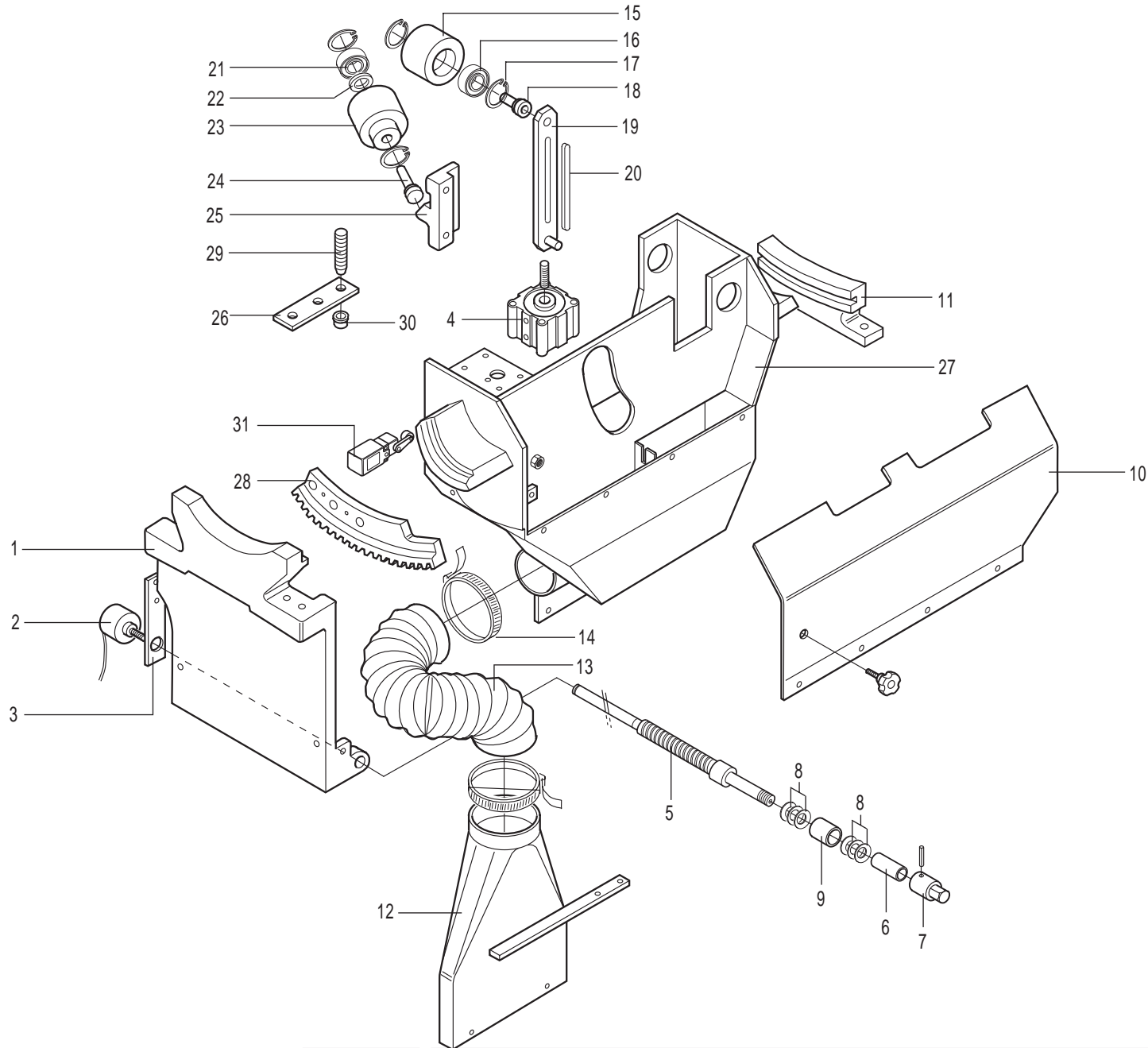
Rif.	Code
1	91530617
2	19206202
3	10642250
4	19206202K
5	10511020
6	92330873
7	10622028
8	91930280A
9	93530223L
10	10640818
11	91730169
12	91730153B
13	92810197
14	92330942
15	10713200
16	19206201
17	91530618
18	10804225
19	91430447
20	72736003
21	91930314A
22	93530614A
23	93730041
24	92330296



	Rif.	Code
LAMA INCL.	1	92890395C
LAMA FISSA	1	92890485
	2	20300164
	3	93530222C
	4	93430315
	5	946500226
	6	93430951
	7	91930282
	8	91930854
	9	20300040
	10	92290965
	11	20300074
	12	93730169
	13	91930657
	14	20300146
	15	20300054

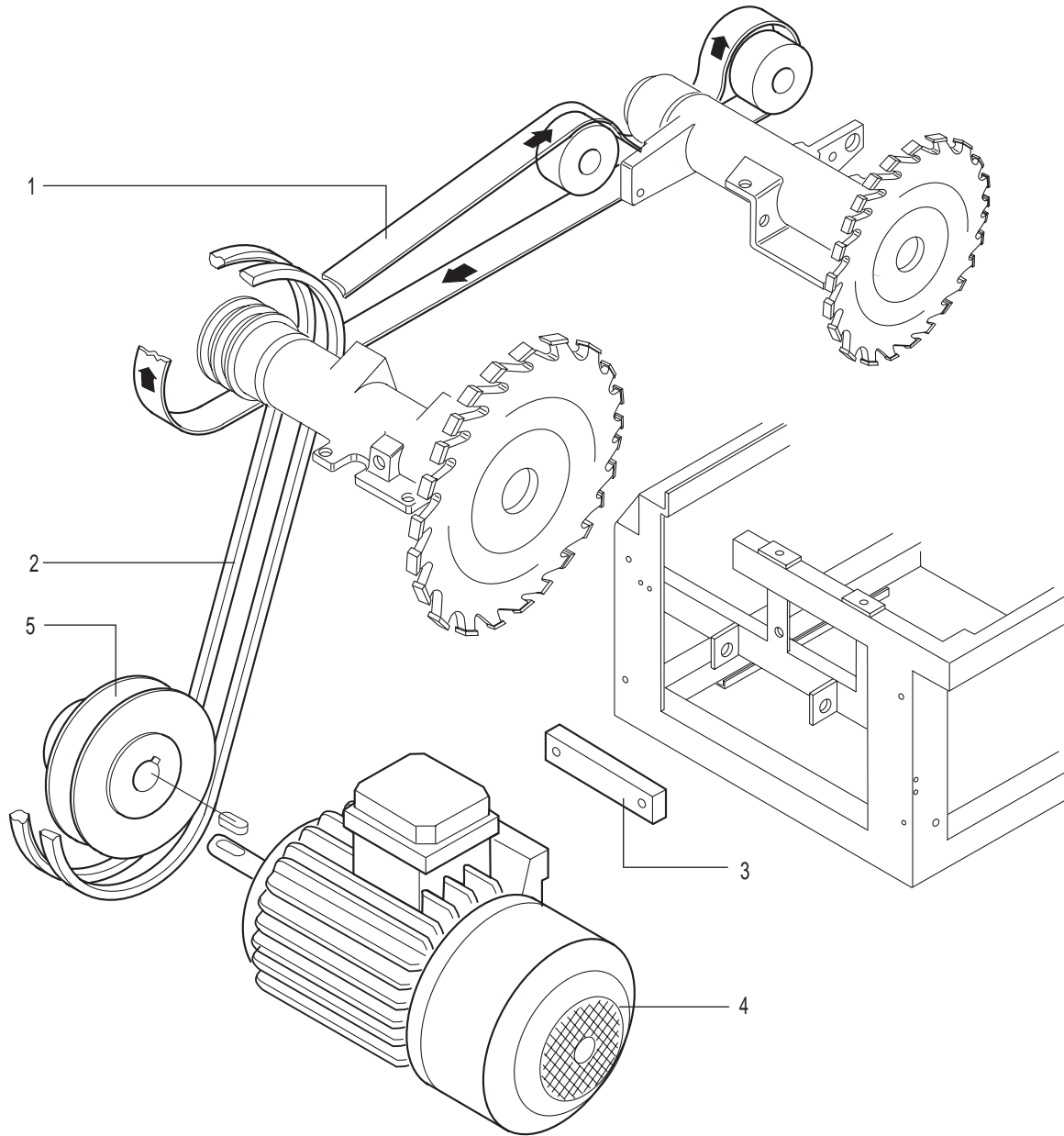


Rif.	Code
1	91630615A
2	19406201
3	93530252
4	93430308
5	92730904
6	33800015
7	10713200
8	92330942
9	93430298A
10	93730013
11	93530800
12	92890461A
13	94190367
14	11000006
15	91930559
16	92210100
17	93530907A
18	91930344A
19	13900007
20	92810199
21	92530300

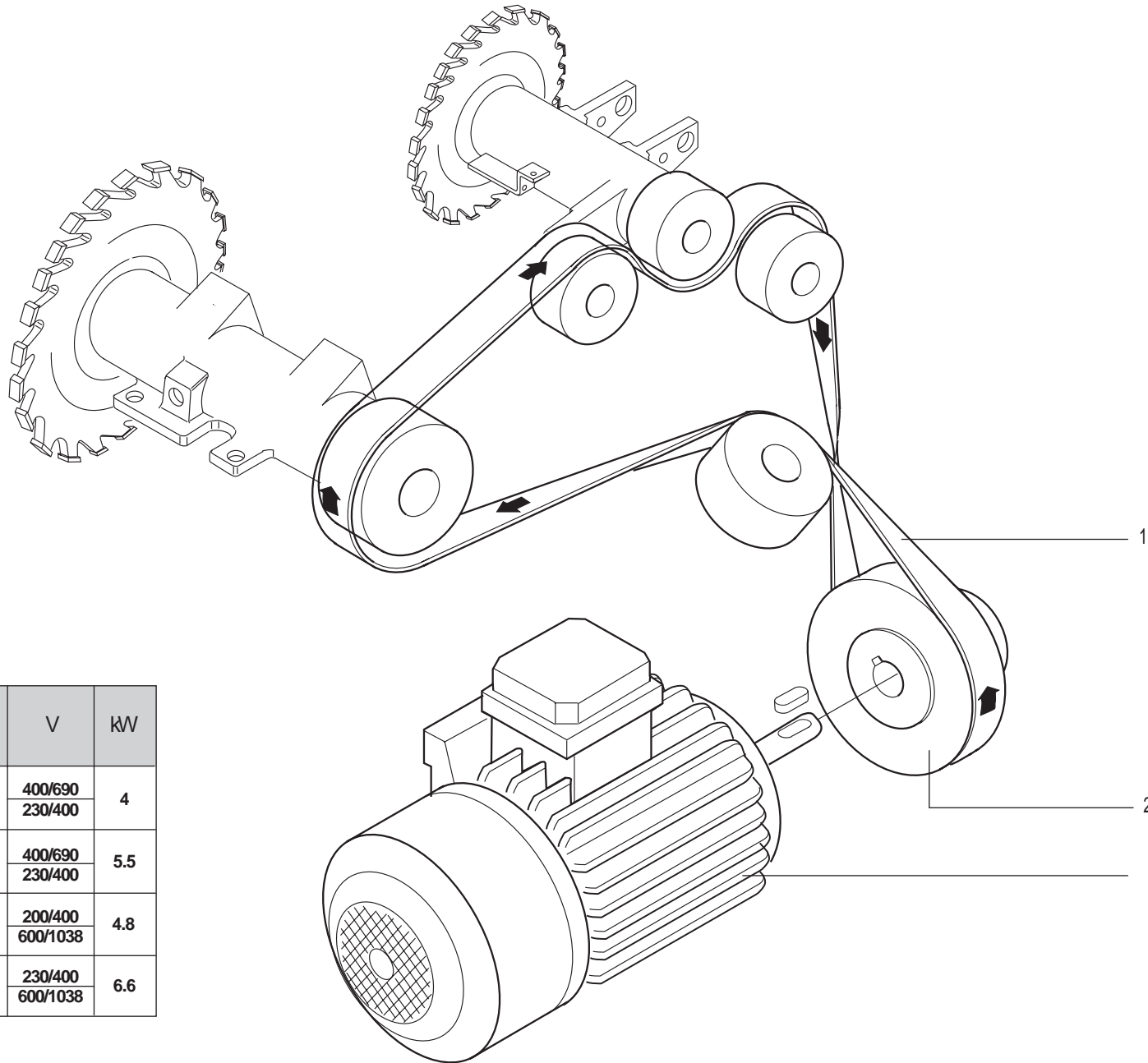


Rif.	Code
1	92810101A
2	35900010
3	94650220
4	20300161
5	93530778
6	92330587
7	91930634
8	19601730
9	92350220
10	91190259
11	92810105
12	94190342A
13	36501030
14	13900030
15	91530615A
16	19406201
17	10713200
18	91930628
19	92930912A
20	10804585
21	19406201
22	92330874
23	91530614A
24	92330952
25	92810196
26	93430300A
27	92890394A
28	91610300
29	93530217
30	13900201
31	33800015

RIF. REF. BETR. RIF.	NUMERODICODICE CODENUMBER N.D.REFERENCE BESTELNUMMER NÚMERODECÓDIGO	Hz	V	kW
4	30121213	50/60	400/690	4
	30121202	50/60	400/690	5.5
	30121216 30121219		400/690 230/400	7.5
	30121207	60	230/400	4.8
	30121204 30121205	60	230/400 600/1038	6.6
	30121220 30121221 30121222 30121218	60	230/400 208/360 440/760 600/1040	9

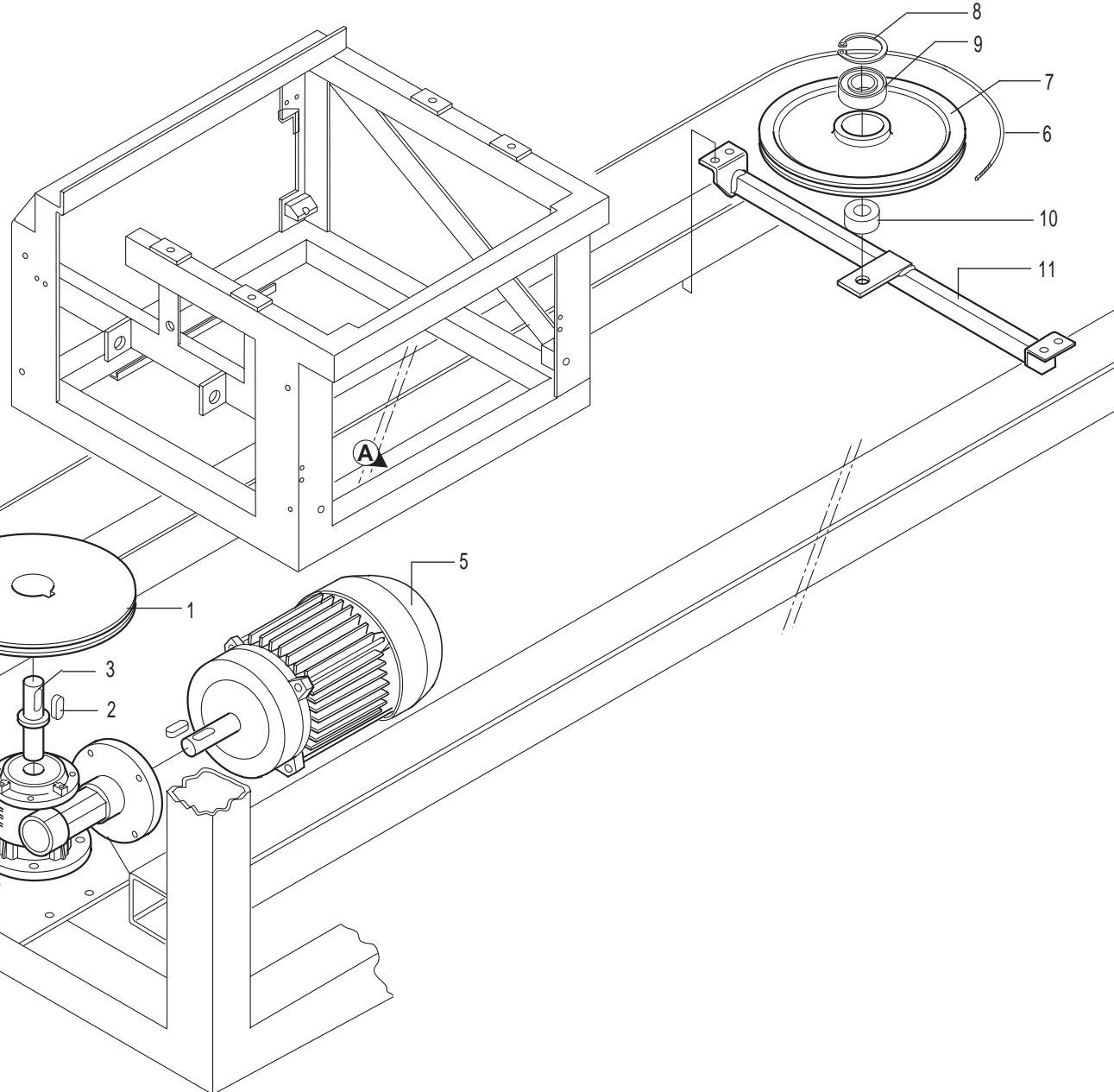
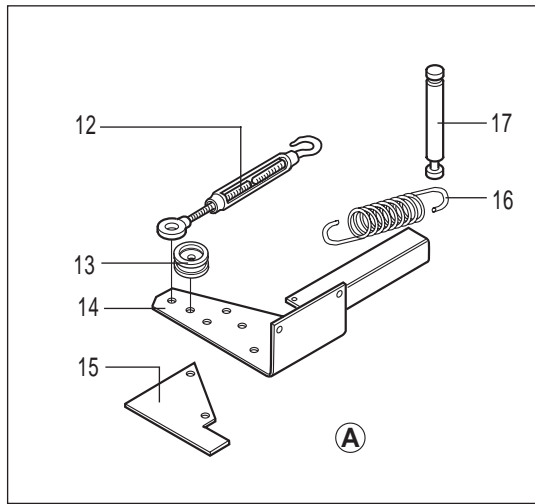


Rif.	Code
1	11290030
50 Hz.	2
60 Hz.	2
50 Hz.	3
60 Hz.	3
4	☰
50 Hz.	5
60 Hz.	5

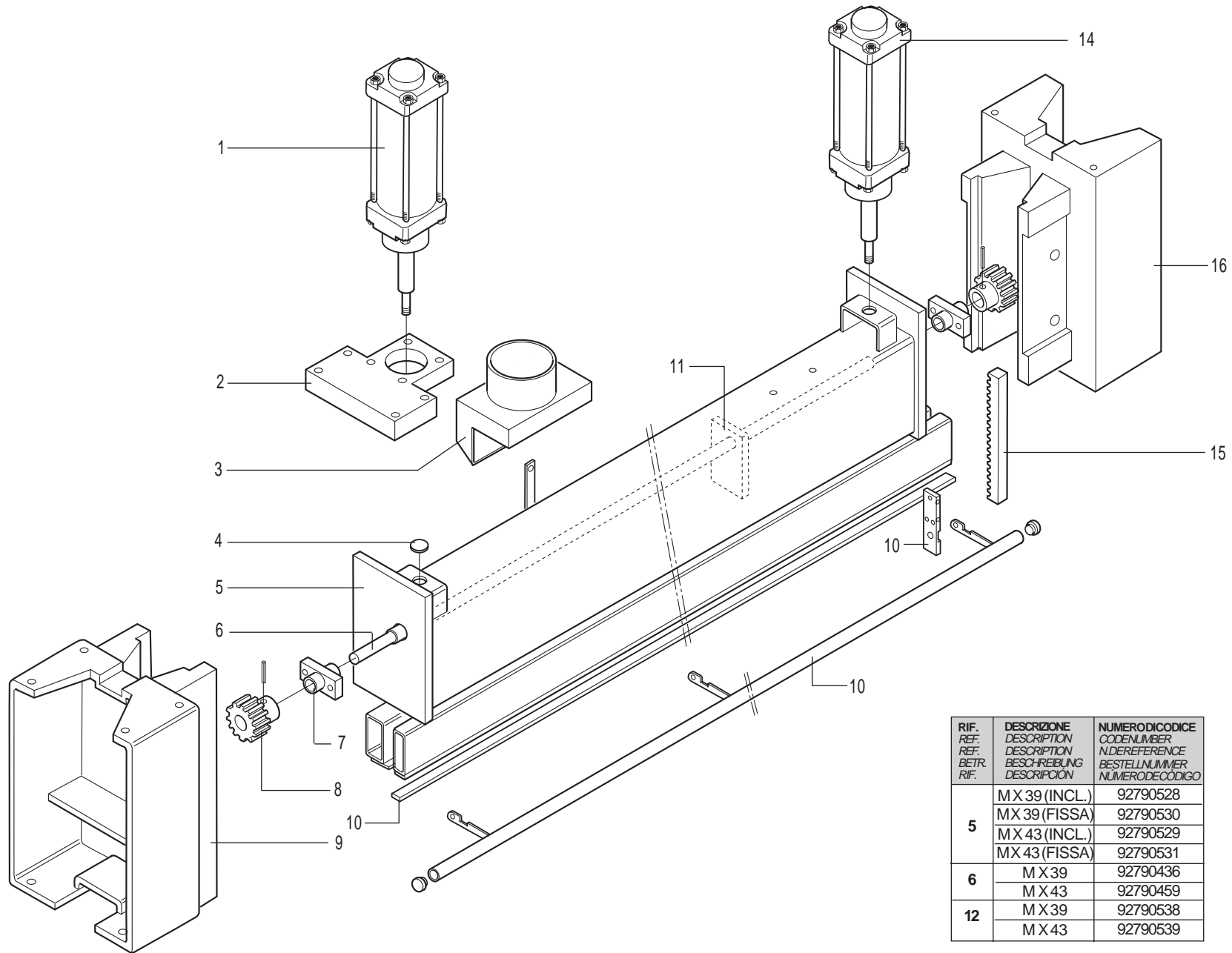


RIF. REF. BETR. RIF.	NUMEROCODICE CODENUMBER N.DEREFERENCE BESTELLNUMMER NUMEROCODIGO	Hz	V	kW
3	30121213 30121206	EU50	400/690	4
			230/400	
	30121202 30121201	EU50	400/690	5.5
			230/400	
30121207 30121209	60	200/400	4.8	
		600/1038		
30121204 30121205	60	230/400	6.6	
		600/1038		

Rif.	Code
1	11290014A
2	91540600
3	

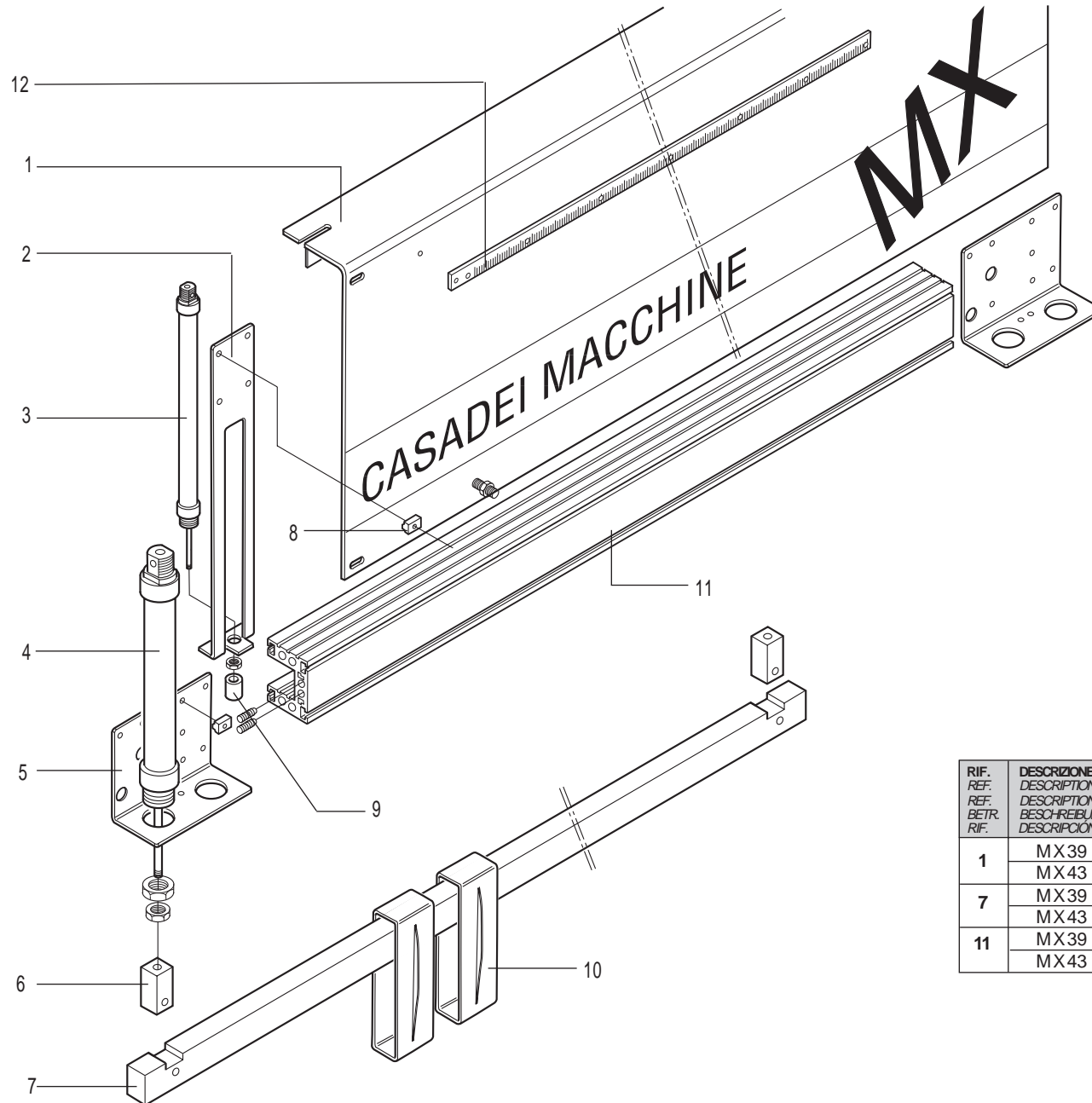


Rif.	Code
1	91530508
2	10804420
3	91930356
4	11700127
5	30806411
6	13900130
7	91530110
8	10713500
9	19416300
10	92380330
11	92890425
12	10400008
13	94650564
14	92890418A
15	93330552
16	93730088
17	91930852



Rif.	Code
1	20300199
2	93430970A
3	94190153A
4	10641623
5	
6	
7	93130025
8	91630110
9	92810301
10	10300901
11	93450206
12	
13	92890154B
14	20300102
15	91630800
16	92810302

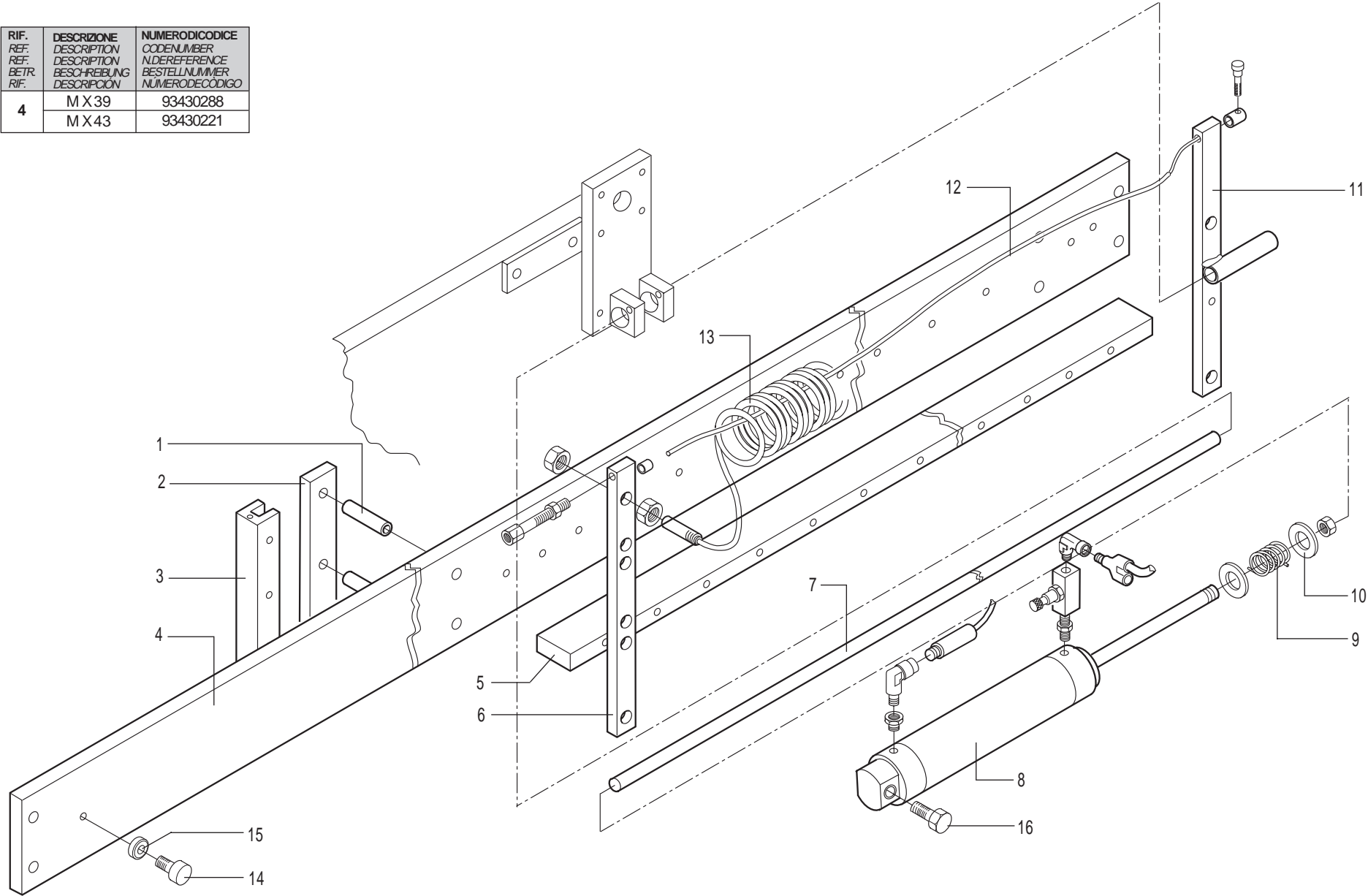
RIF.	DESCRIZIONE	NUMERODICODICE
REF.	DESCRIPTION	CODENUMBER
BETR.	BESCHREIBUNG	BESTELNUMMER
RIF.	DESCRIPCION	NUMERODECODIGO
5	MX 39 (INCL.)	92790528
	MX 39 (FISSA)	92790530
	MX 43 (INCL.)	92790529
	MX 43 (FISSA)	92790531
6	MX 39	92790436
	MX 43	92790459
12	MX 39	92790538
	MX 43	92790539



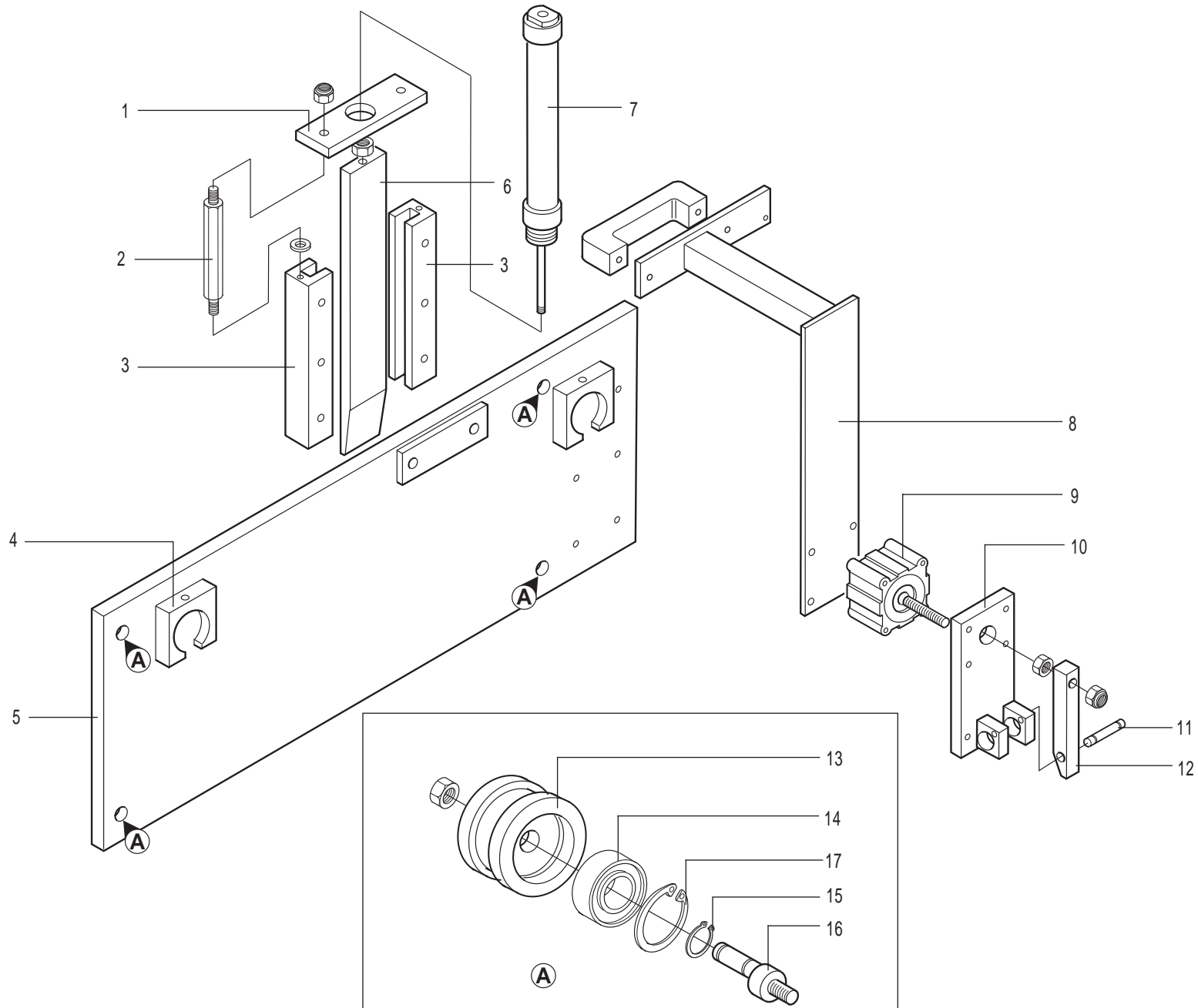
Rif.	Code
1	
2	93130023
3	20300085
4	20300167
5	93130024
6	93430049
7	
8	92738124
9	92350106
10	94650239
11	
12	92440222A

RIF.	DESCRIZIONE	NUMERODICODICE
REF.	DESCRIPTION	CODENUMBER
BETR.	BESCHREIBUNG	N.DEREFERENCE
RIF.	DESCRIPCION	BESTELLNUMMER
	DESCRIPCION	NUMERODECODIGO
1	MX 39	91190754
	MX 43	91190755
7	MX 39	92730356
	MX 43	92730357
11	MX 39	92740201
	MX 43	92740202

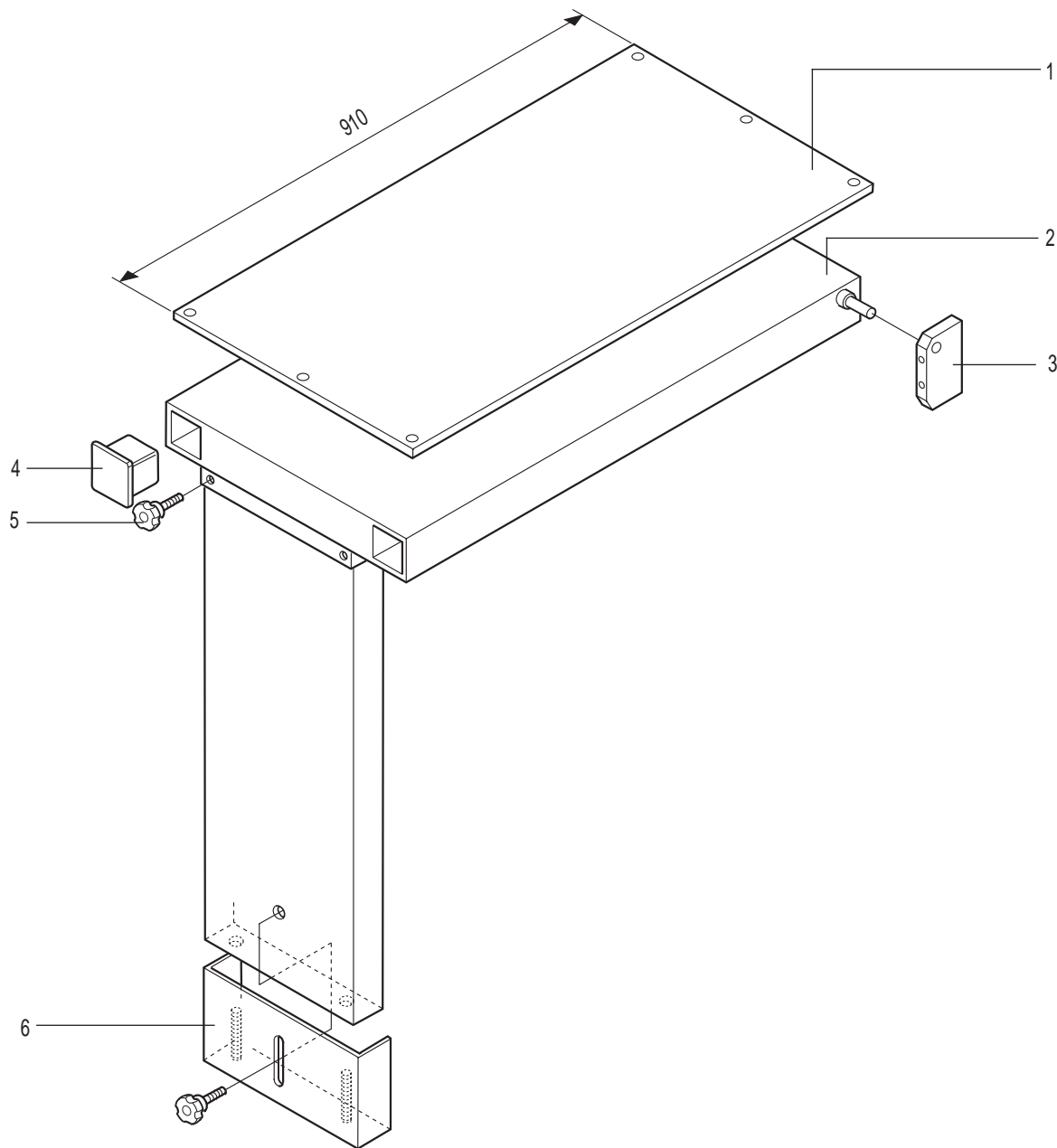
RIF. REF. BETR. RIF.	DESCRIZIONE DESCRIPTION BESCHREIBUNG DESCRIPCION	NUMERODICODICE CODENUMBER N.DEREFERENCE BESTELLNUMMER NUMERODECODIGO
4	M X 39	93430288
	M X 43	93430221



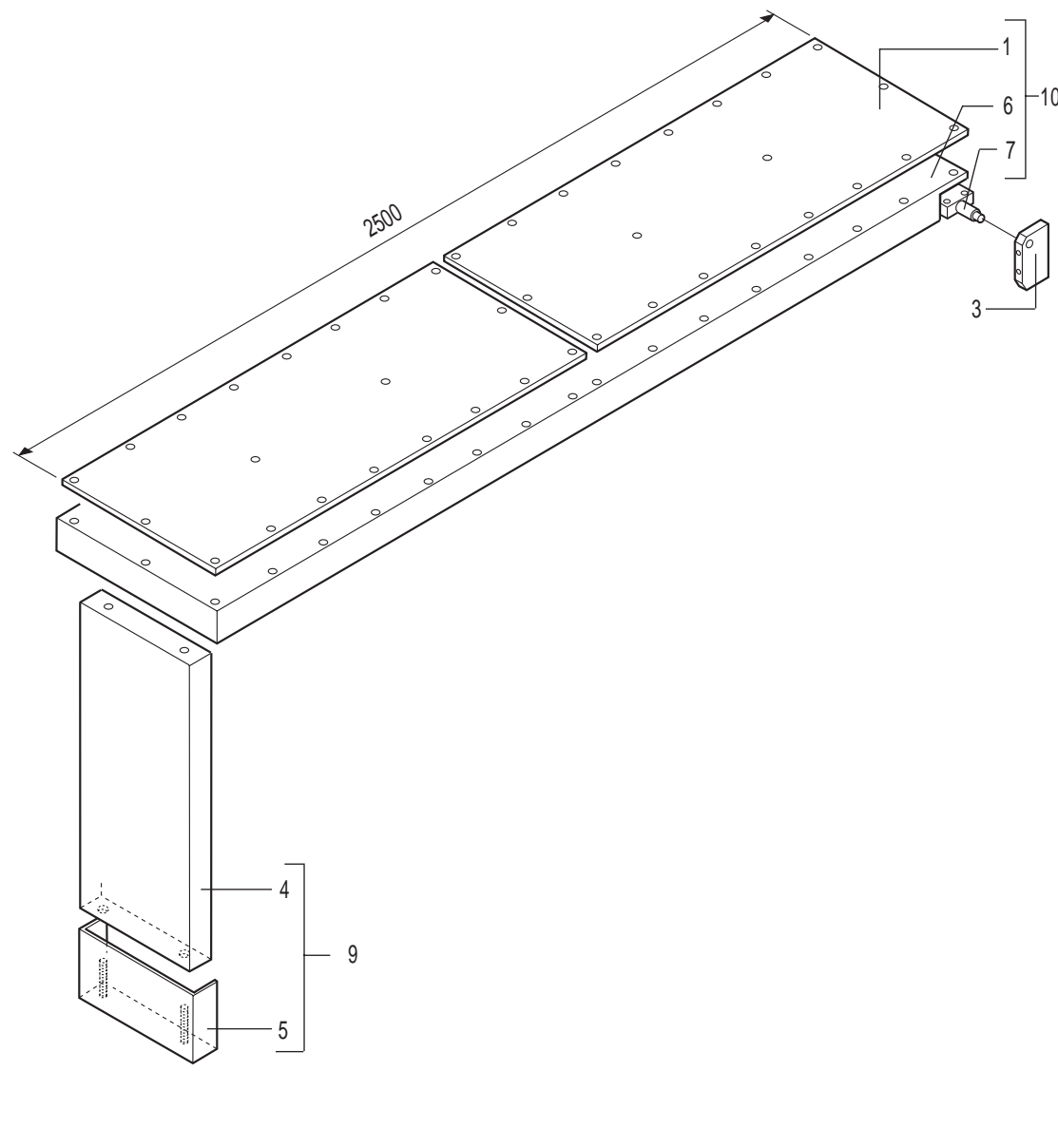
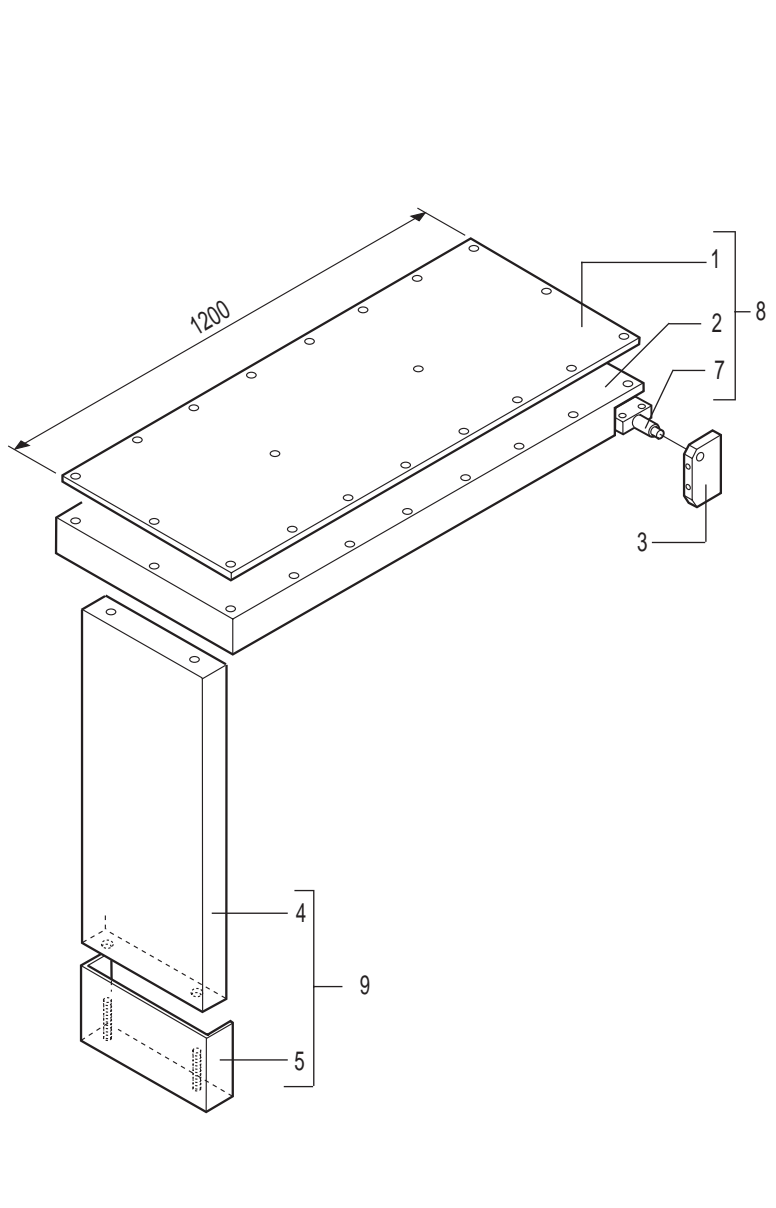
Rif.	Code
1	92530241
2	93430287
3	92230363
4	☐
5	93430292
6	93430284
7	91930927
8	20300110
9	93730003
10	10651637
11	93490906
12	10930009
13	20700023
14	92330560
15	94750018
16	93530811



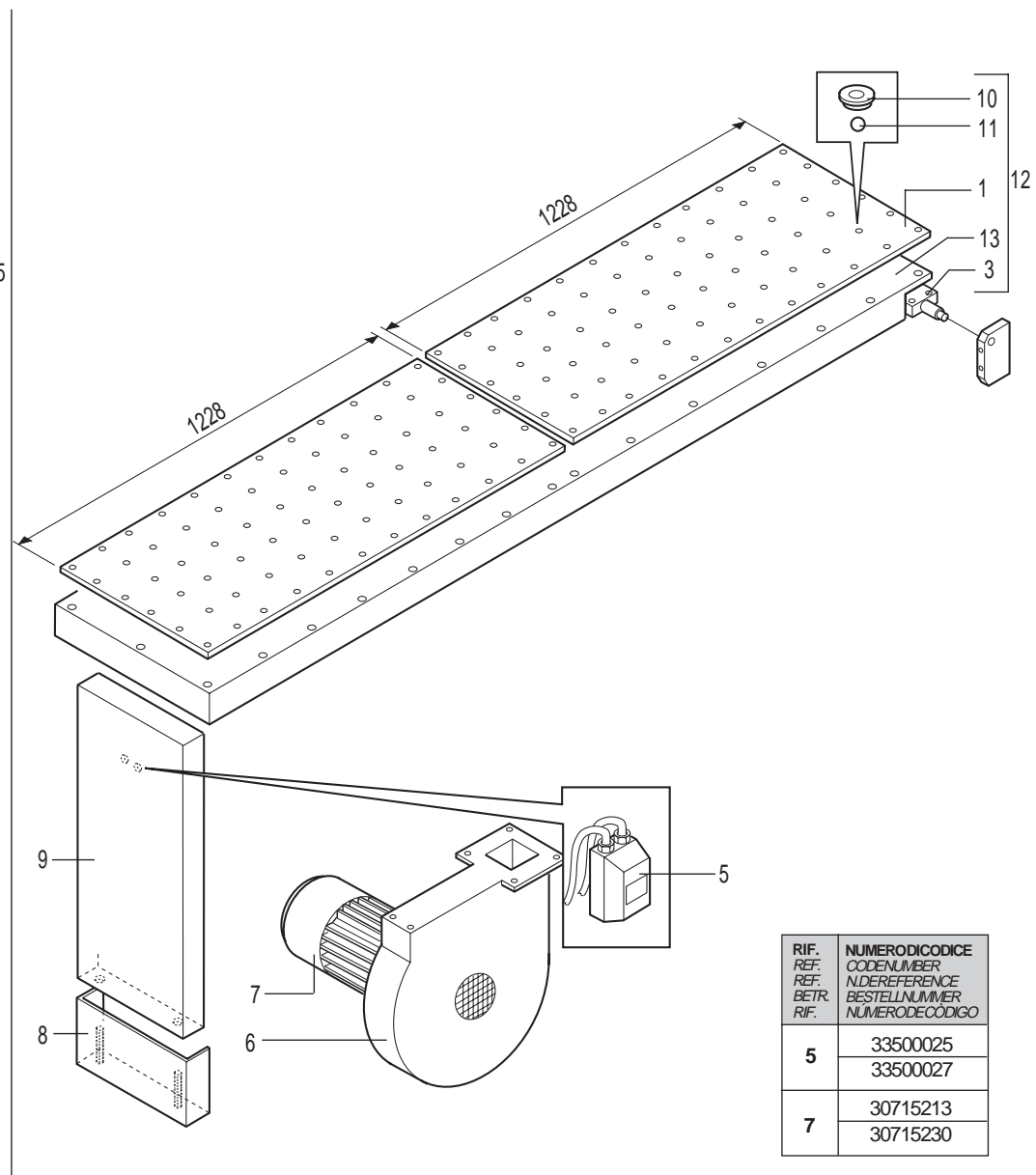
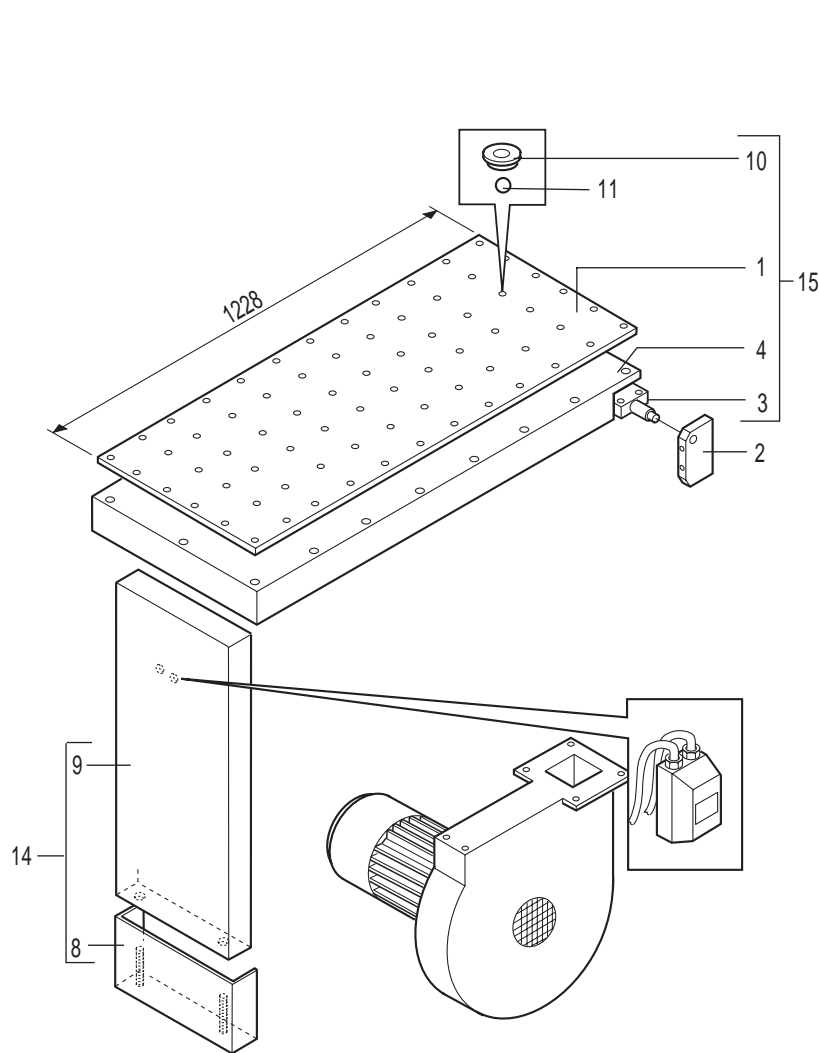
Rif.	Code
1	93430285
2	93530822
3	92230363
4	94650229
5	93430203
6	93430283
7	20300128
8	92790490A
9	20300034
10	92290924
11	92230342
12	91930821
13	91530706
14	19000608
15	10720800
16	91930012A
17	10712200



Rif.	Code
1	91250906A
2	91290834
3	93430598
4	11000081
5	11033070
6	91290836

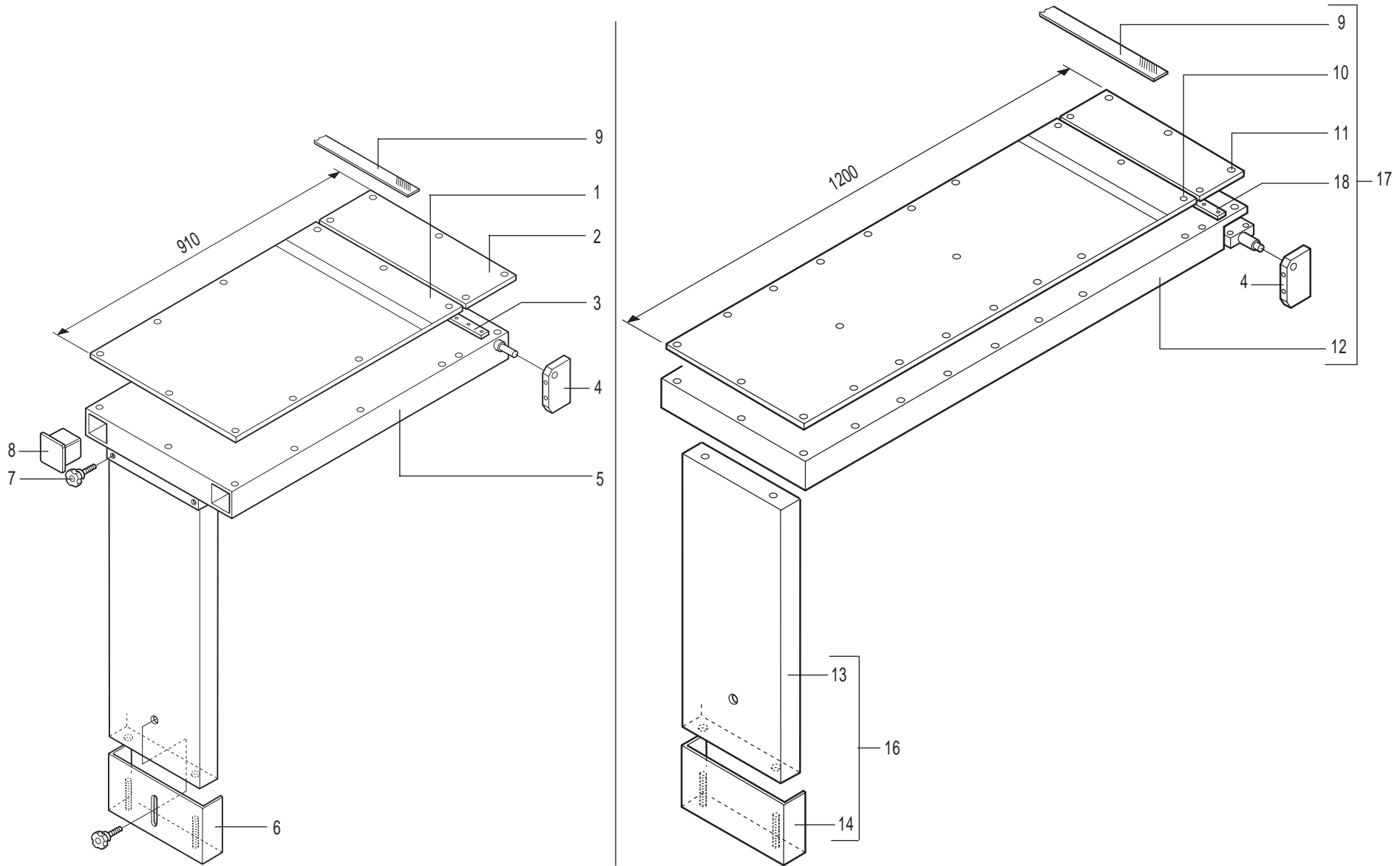


Rif.	Code
1	91250942
2	912908678
3	93430598
4	92890474
5	91290837
6	912908688
7	93490206
8	727L1017
9	727L1010
10	727L1009

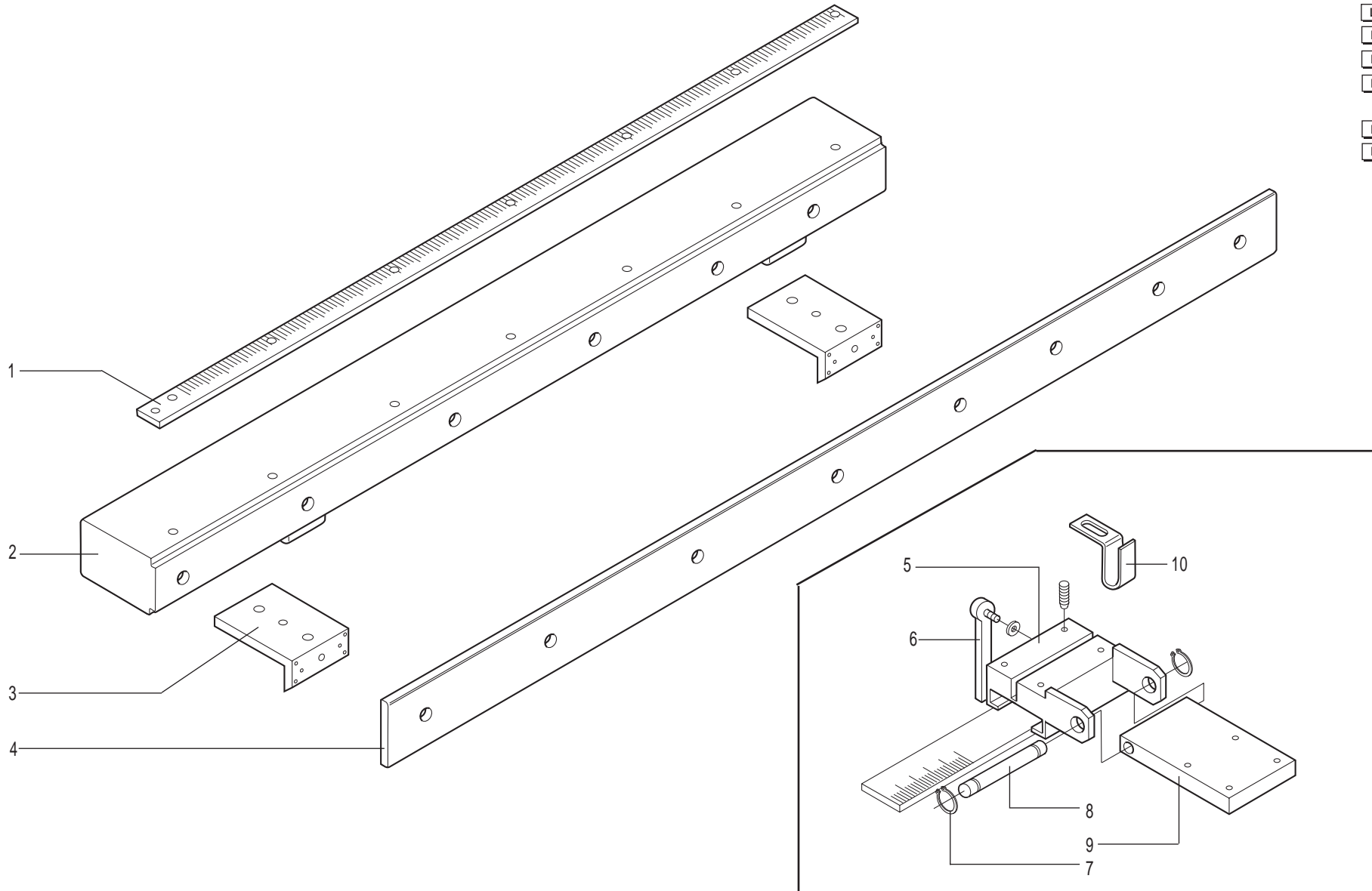


RIF. REF. REF. BETR. RIF.	NUMERODICODICE CODENUMBER N.DEREFERENCE BESTELNUMMER NUMERODECODIGO
5	33500025 33500027
7	30715213 30715230

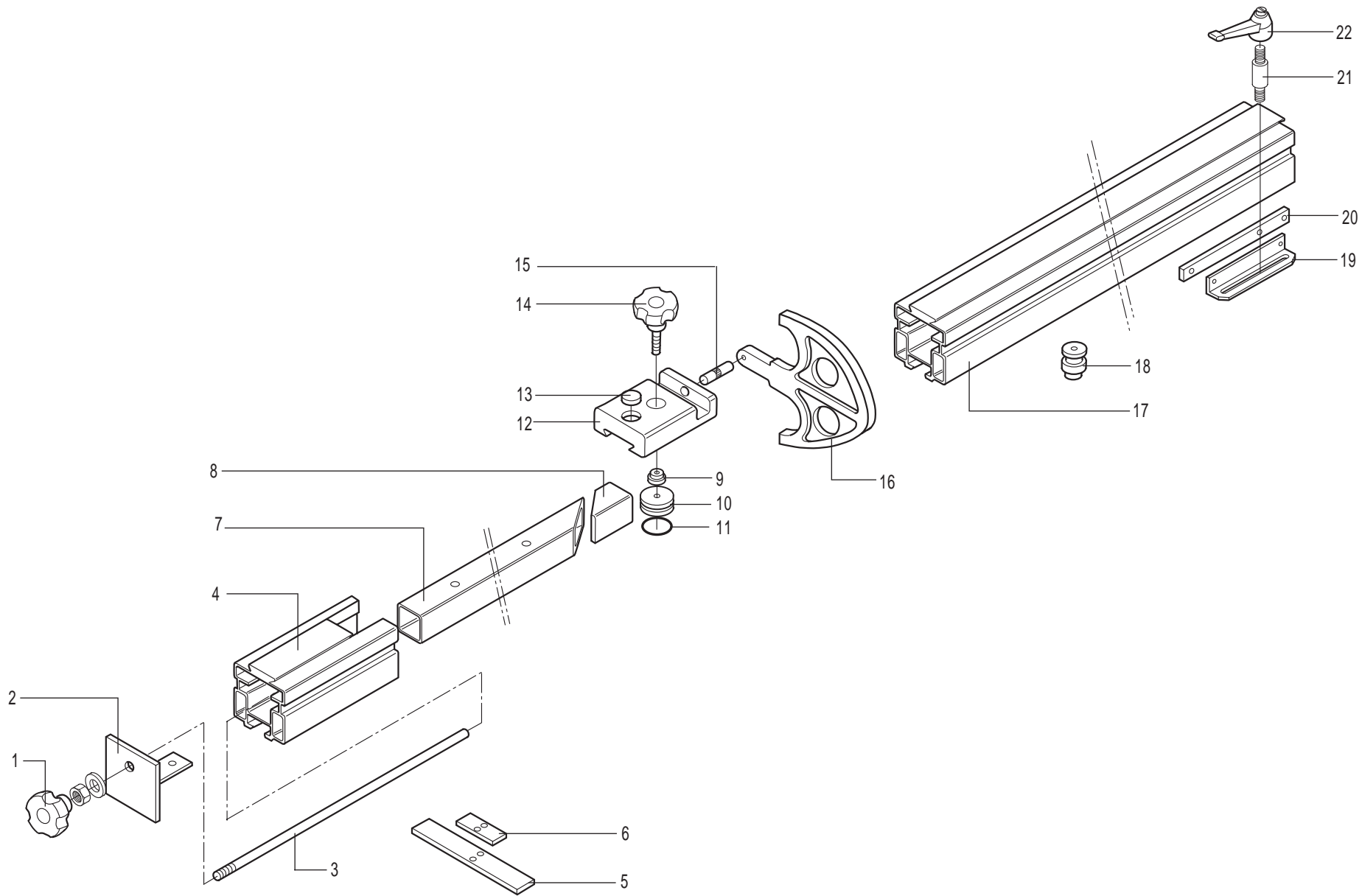
Rif.	Code
1	91250887B
2	93430598
3	93490206
4	91290867B
5	☰
6	13900045
7	☰
8	92890474
9	91290832
10	92350519
11	13950120
12	72721008
13	91290868B
14	727L1010
15	727L1004



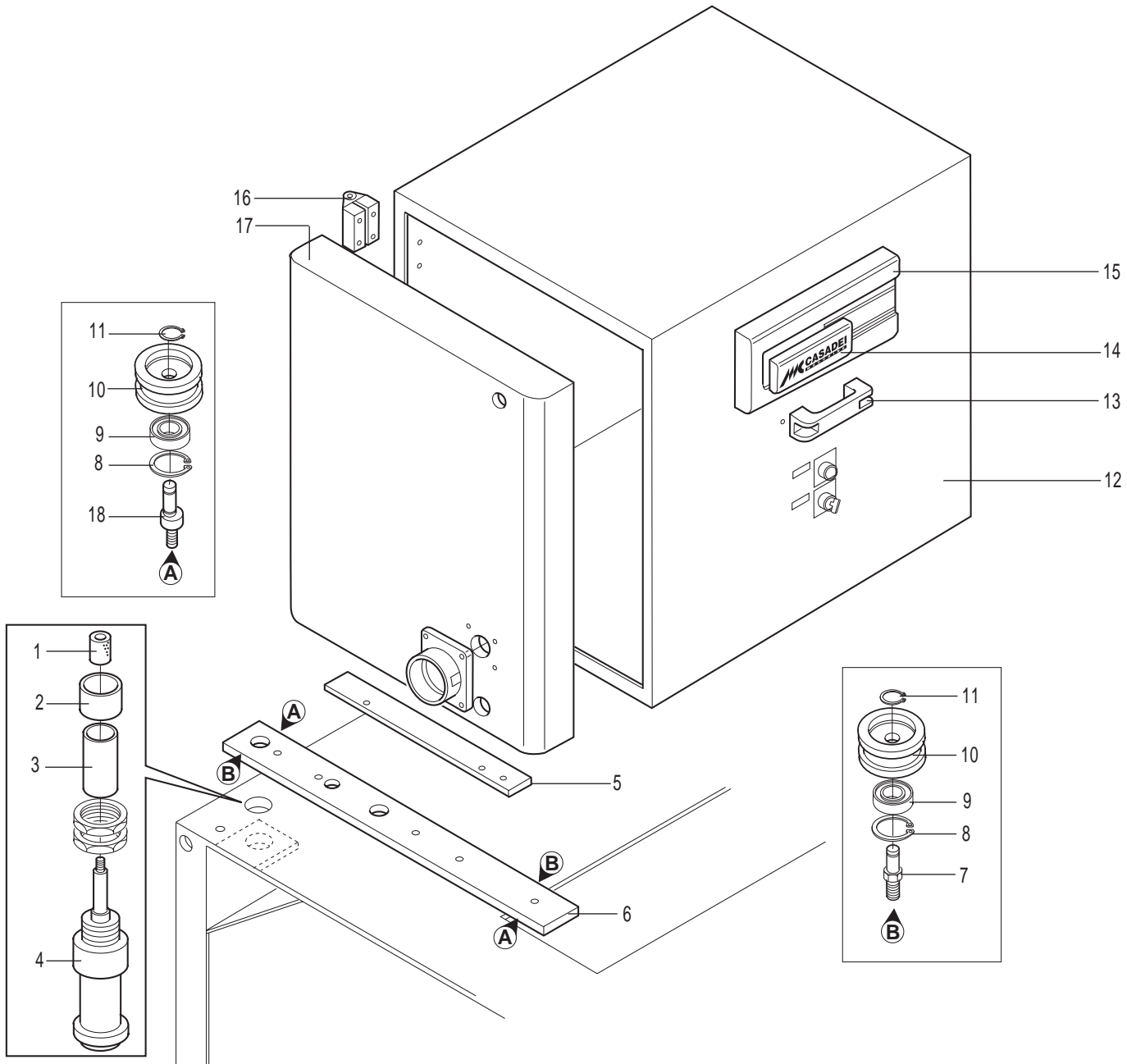
Rif.	Code
1	91250903A
2	91250902A
3	93430215A
4	93430598
5	91290834
6	91290836
7	111033070
8	11000081
9	92440129
10	91250908A
11	91250909A
12	91290844
13	92890474
14	91290837
15	92230985
16	727L1010
17	727L1015
18	93490206



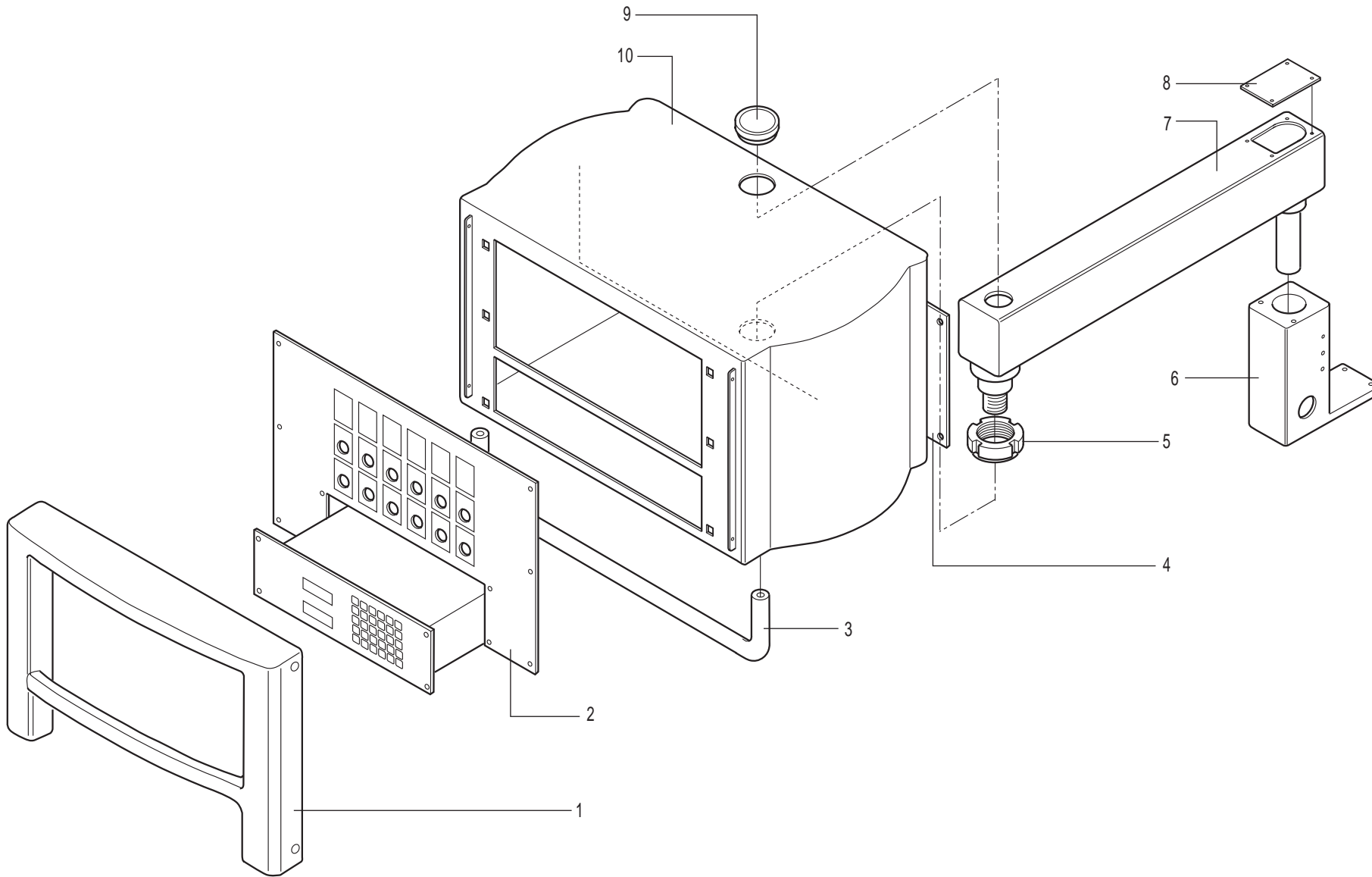
	Rif.	Code
L = 1200	1	92430238
L = 2500	1	92430237
L = 1200	2	93490000A
L = 2500	2	93490001A
	3	93430051A
L = 1200	4	92130626A
L = 2500	4	92130627
	5	92890217
	6	93990271
	7	10721200
	8	91830843
	10	93730147



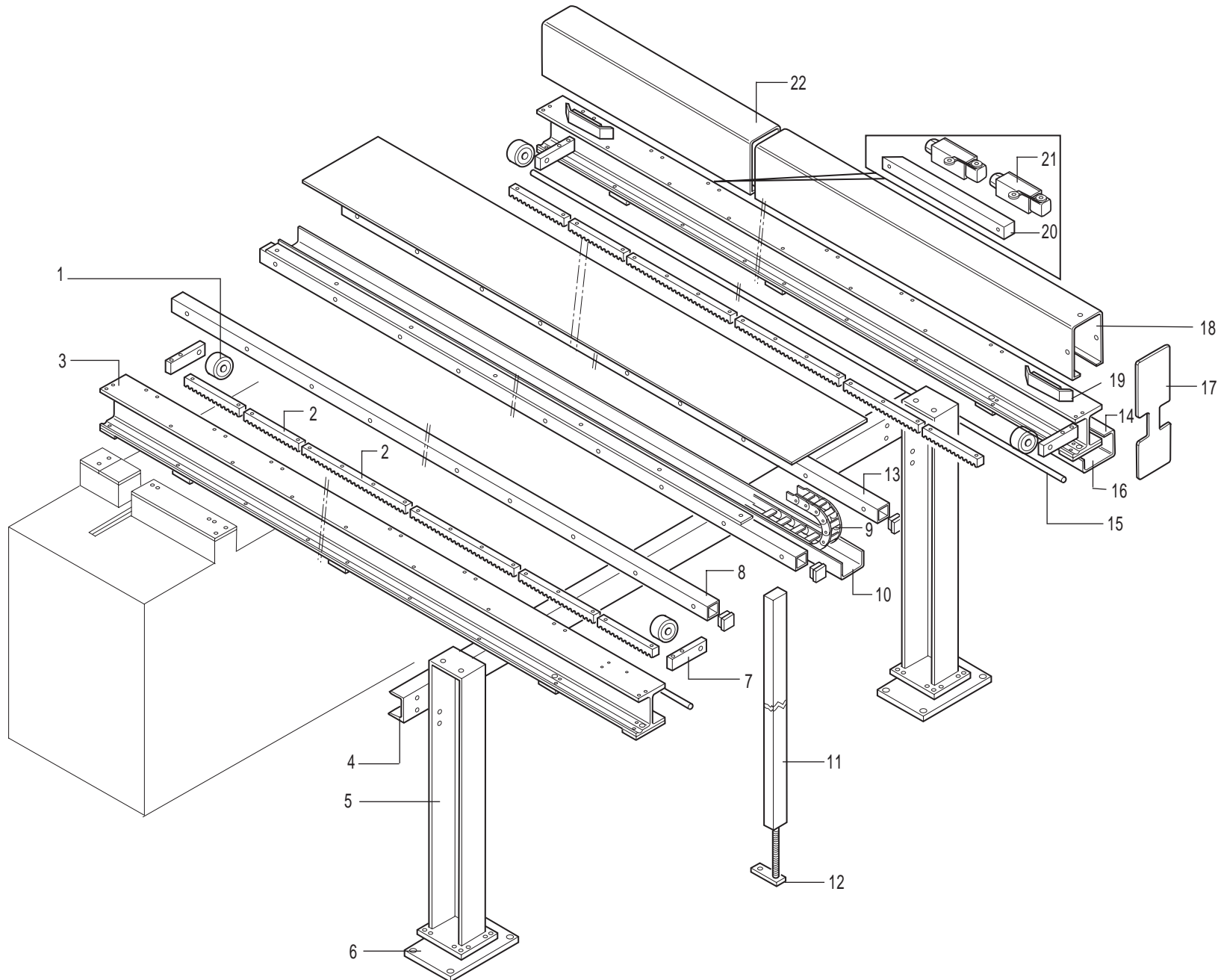
Rif.	Code
1	11034002
2	92290101
3	91930246
4	92148117B
5	92230216
6	92230044
7	92730032
8	92230816
9	92330576
10	92350504
11	10313401
12	92748162
13	94750002
14	11035015
15	91830580
16	94720020
17	92748103
18	92330829
19	92930022
20	92230047
21	91930859
22	11015000



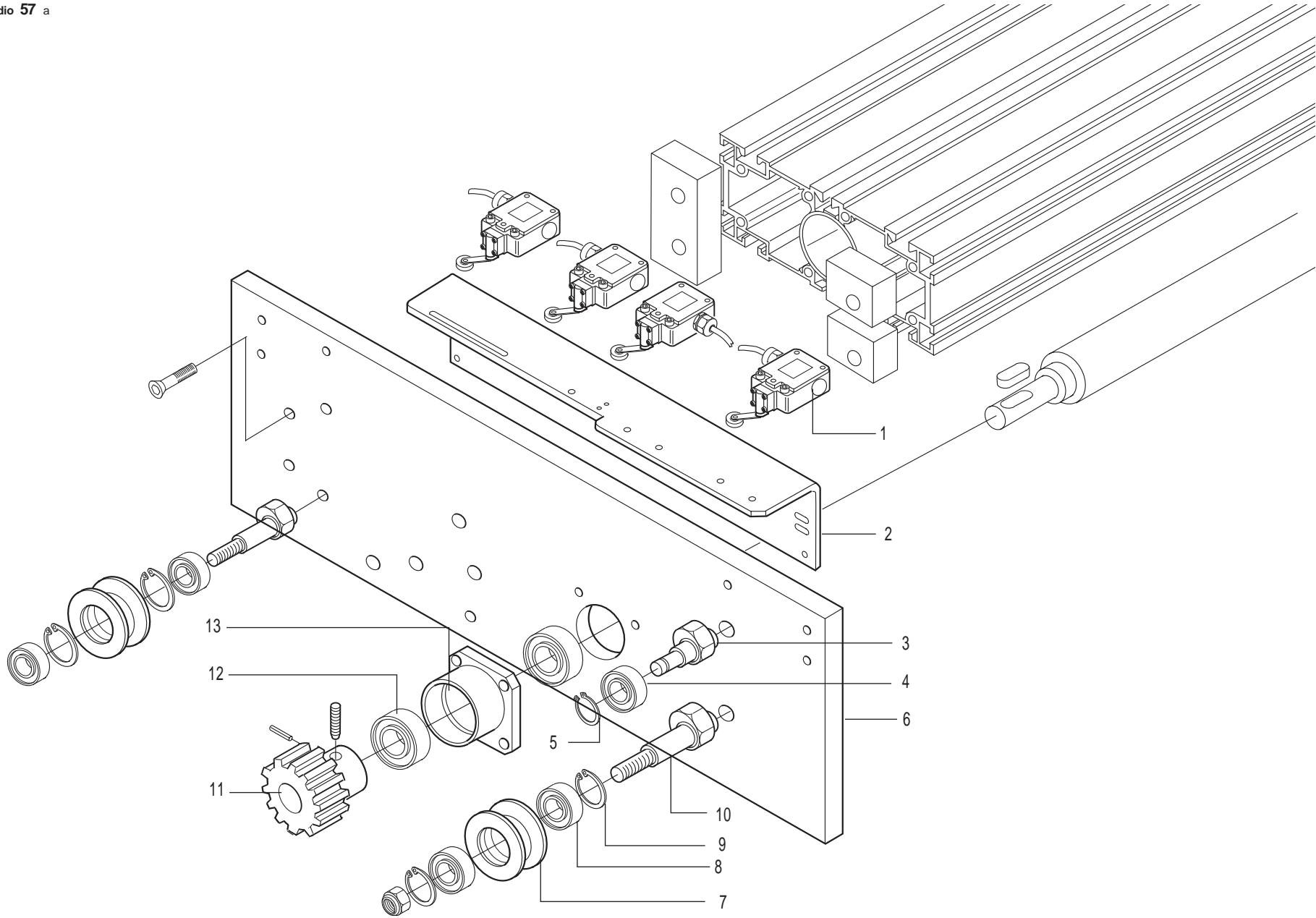
Rif.	Code
1	94650569
2	10612003
3	92030253
4	20300003
5	93430697
6	93430959
7	91930033
8	10712200
9	19000608
10	91530706
11	10720800
12	91190746A
13	11050001
14	93050400A
15	91100103
16	11000050
17	91190747
18	81930012A



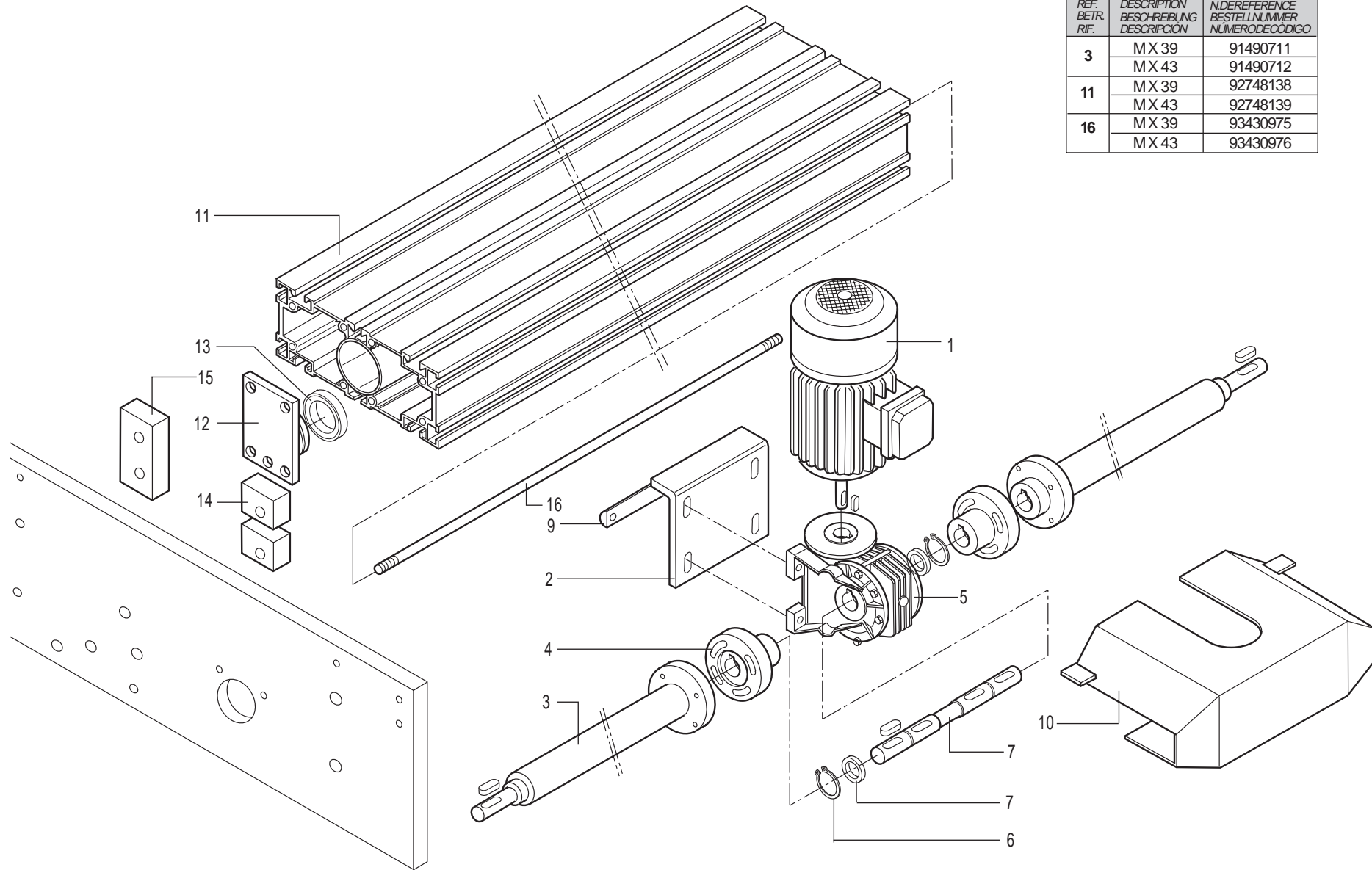
	Rif.	Code
IPC400	1	91100105A
EM 11	1	91100106
EM 11	2	93030046
EM 19	2	93030082
IPC400	2	93030081
	3	93830003
	4	91130526
	5	10511060
	6	92790522
	7	92790504A
	8	91130178
	9	92530411
IPC400	10	911908731
EM 11	11	91190587A



Rif.	Code
1	13900041
L=100	2 91630813
L=300	2 91630814
L=500	2 91630804
L=1000	2 91630806
L=2500	3 92730109
L=3300	3 92730110
L=4300	3 92730111
C39	4 93490401
C43	4 93490402
5	92790540
6	92930937
7	93330559
L=500	50x50 8 727L1101A
L=3300	50x50 8 727L1102A
L=4300	50x50 8 727L1103A
L=2500	9 36505030
L=3300	9 36505031
L=4300	9 36505032
L=2500	10 92930938A
L=3300	10 92930939A
L=4300	10 92930940A
11	92790023
12	92290913
650xC=3300	13 727L1111A
650xC=2500	13 727L1110A
650xC=4300	13 727L1112A
C=3300	14 91190766
C=4300	14 91190767
C=2500	15 91930935
C=3300	15 91930936
C=4300	15 91930937
SX	16 91190765
DX	16 91190764
17	91100107A
18	91190768A
19	94030507
20	94030507
21	33800015
C=3300	22 91190769A
C=4300	22 91190770A

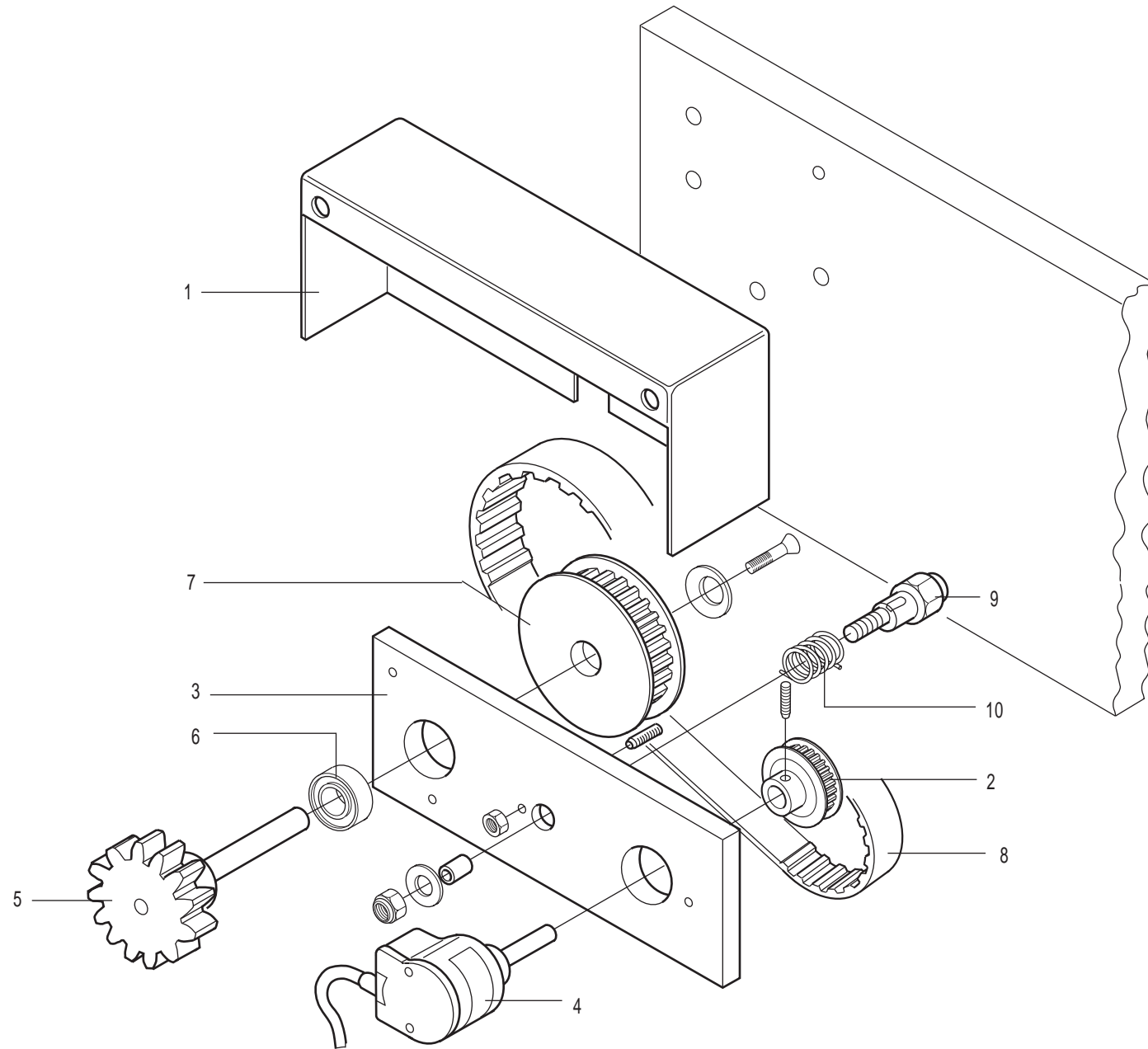


Rif.	Code
1	33800015
2	93330483
3	91930136
4	19416300
5	10721000
6	92930936
7	91530114
8	19406002
9	10713200
10	91930135
11	91630100A
12	19406005
13	92330872

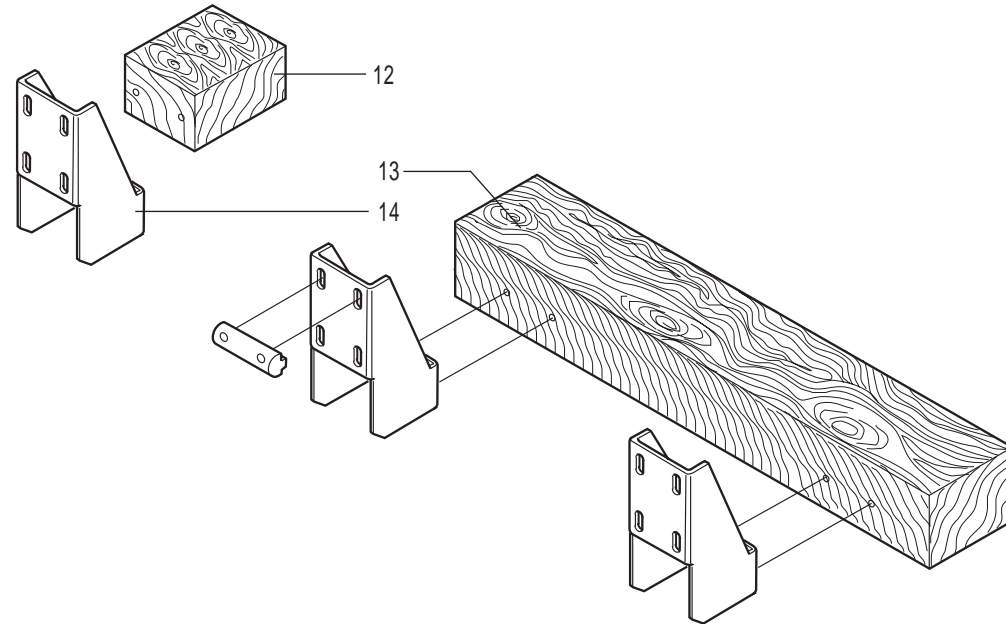
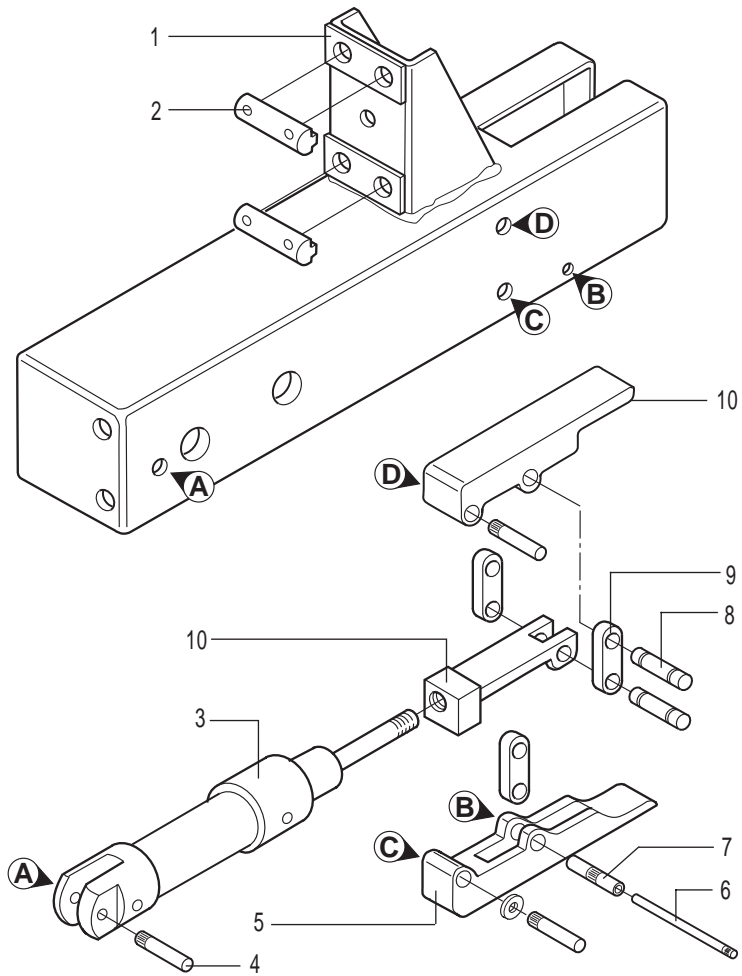


RIF. REF. BETR. RIF.	DESCRIZIONE DESCRIPTION BESCHREIBUNG DESCRIPCIÓN	NUMERODICODICE CODENUMBER N.D.REFERENCE BESTELLNUMMER NUMERODECODIGO
3	MX 39	91490711
	MX 43	91490712
11	MX 39	92748138
	MX 43	92748139
16	MX 39	93430975
	MX 43	93430976

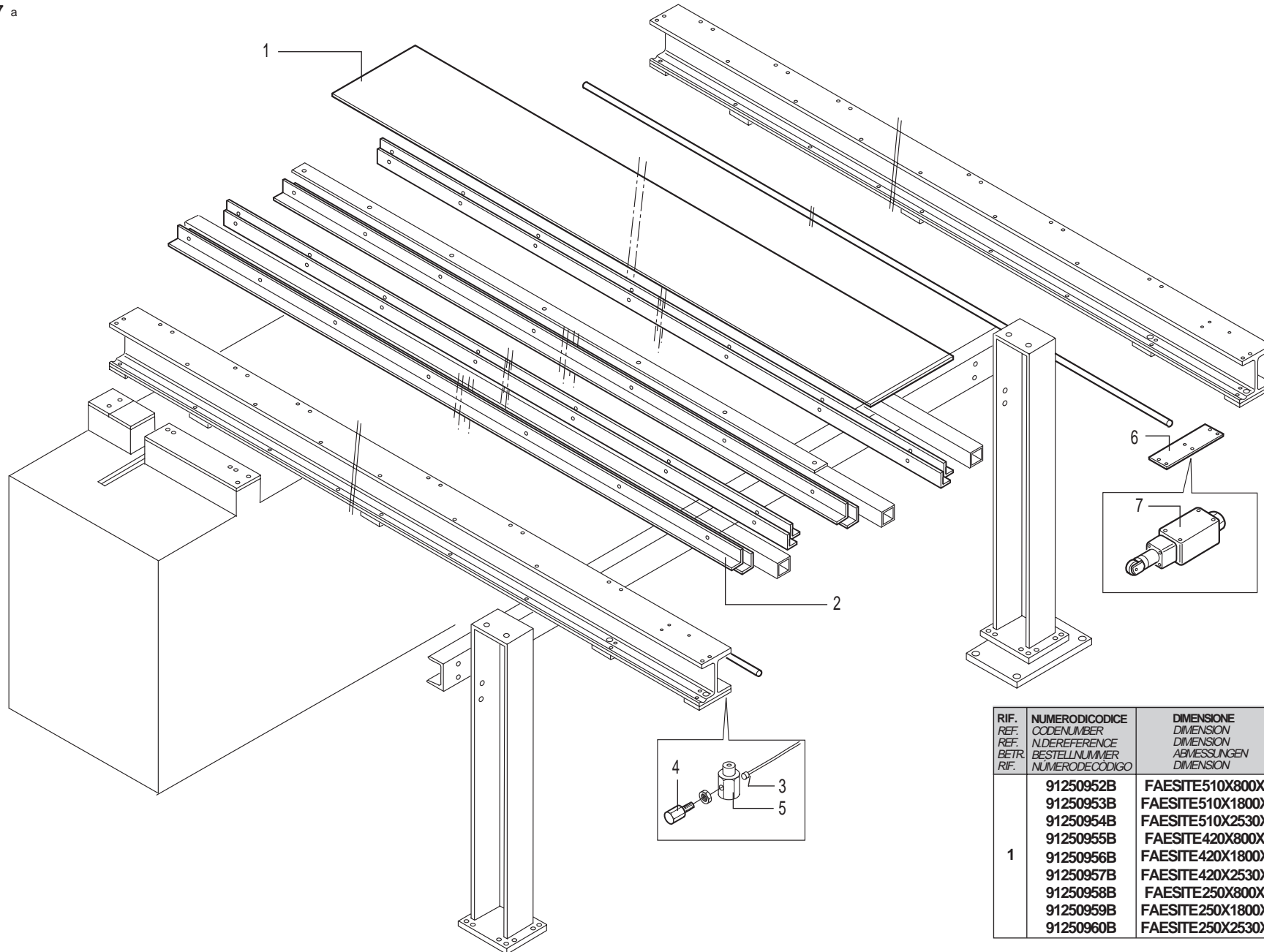
Rif.	Code
1	30806421
2	93330614A
3	☐
4	92310504
5	11700124
6	10722500
7	10682532
8	91930345A
9	92738102
10	91190771
11	☐
12	92390502
13	10350016
14	93430318
15	93430317
16	☐



Rif.	Code
1	91190586
2	91540500A
3	92230886A
4	35900030
5	91630140
6	19406001
7	91500501B
8	11295081
9	91930850B
10	93730046

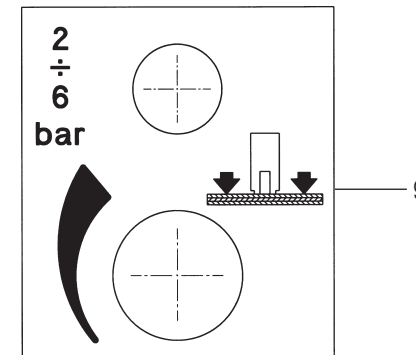
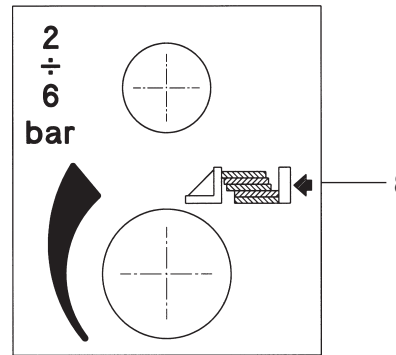
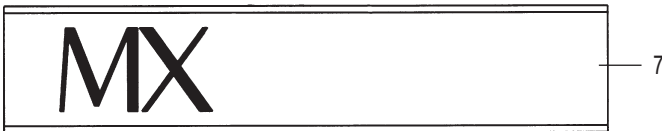
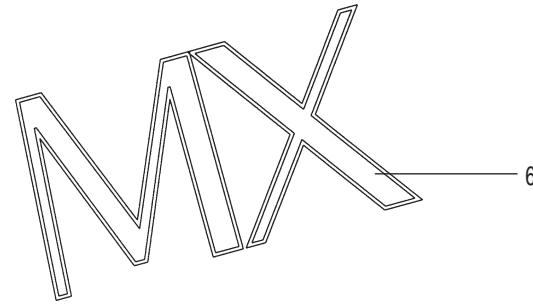
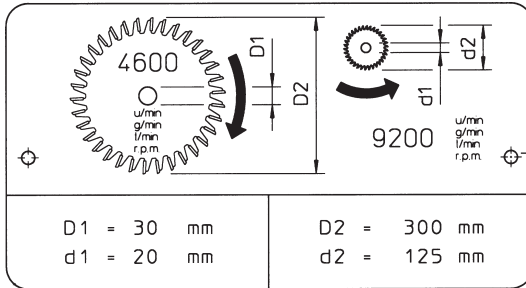
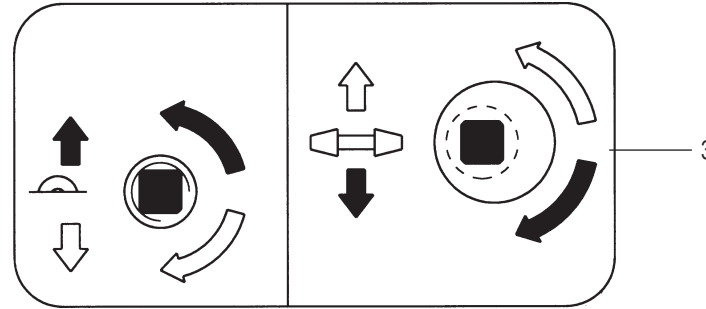
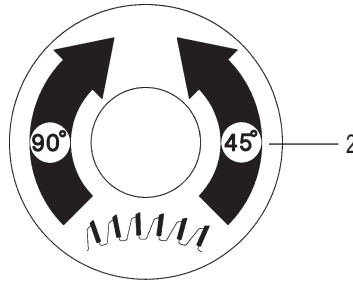
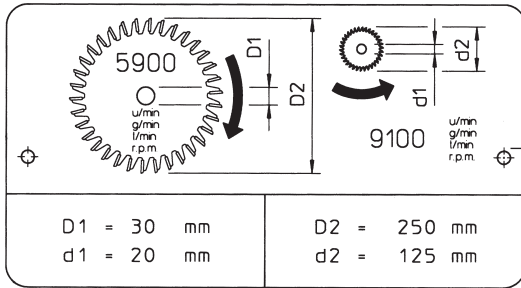


Rif.	Code
1	92890480
2	92738105
3	20300014
4	91830431
5	94610510
6	91930354A
7	91830433
8	91830430
9	93930101
10	94610508
11	94690030A
12	94650532
13	94650533
14	93330484

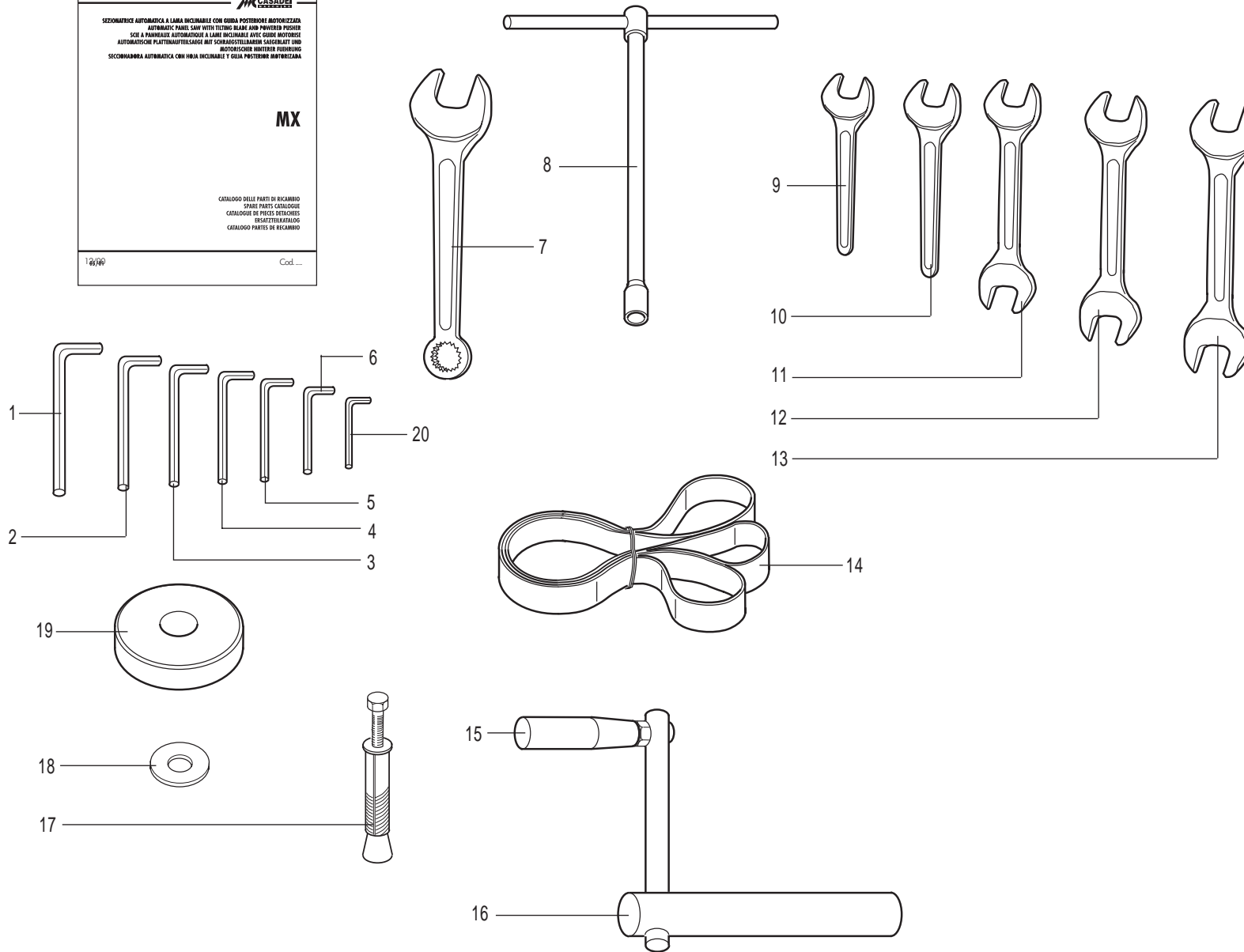
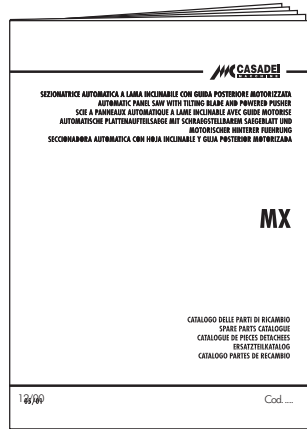


Rif.	Code
1	
C=2500	2 93330838
C=3300	2 93330839
C=4300	2 93330840
3	10900015A
4	10920003
5	91930884
6	93490211
7	33800020

RIF. REF. REF. BETR. RIF.	NUMEROCODICE CODENUMBER N.D.REFERENCE BESTELLNUMMER NUMERODECODIGO	DIMENSIONE DIMENSION DIMENSION ABMESSUNGEN DIMENSION
1	91250952B	FAESITE510X800X4
	91250953B	FAESITE510X1800X4
	91250954B	FAESITE510X2530X4
	91250955B	FAESITE420X800X4
	91250956B	FAESITE420X1800X4
	91250957B	FAESITE420X2530X4
	91250958B	FAESITE250X800X4
	91250959B	FAESITE250X1800X4
	91250960B	FAESITE250X2530X4



Rif.	Code
1	92440493
2	92440733
3	92440734B
4	93050797
5	93050812
6	95050483
7	95050493
8	95050404
9	95050403



Rif.	Code
1	12060015
2	12060014
3	12060013
4	12060012
5	12060011
6	12060025
7	94830016B
8	12090003
9	12010004
10	12010021
11	12020019
12	12020021
13	12020005
14	11290014A
15	716034
16	72790026A
16	72790026B
17	13900114
18	10650856
19	94610060
20	12060024